

Eastern New Mexico University

Main Campus (Portales, New Mexico)

2025

Annual Security and Fire Safety Report



TABLE OF CONTENTS

- A Letter from Dr. Johnston 4
- A Message from the Chief of Police 5
- Annual Security and Fire Safety Report 6
 - ENMU DPS Vision and Mission Statements 7
 - What You Can Expect from ENMU DPS..... 8
 - ENMU DPS Services..... 8
 - Cooperation and Commitment to Safety and Security..... 8
 - Working Relationships with Other Law Enforcement Agencies..... 9
- How to Report a Crime or Emergency 10
 - When to Call 911..... 10
 - Voluntary, Confidential Reporting 11
 - Obtaining Copies of Police Reports from ENMU DPS..... 11
 - Preferred Campus Security Authorities 12
- Mass Notification Systems 13
- Timely Warnings and Emergency Notifications to Campus 15
 - Timely Warning Notice 15
 - Determining the Need for a Timely Warning Notice..... 16
 - Determining the Content of a Timely Warning Notice 16
 - Disseminating Information to the Campus Community..... 17
- Emergency Management..... 18
- What to do in an Emergency..... 19
 - Fire Alarms..... 19
 - Bomb Threat..... 19
 - Severe Weather..... 19
 - Medical Emergencies..... 19
 - Motor Vehicle and Bicycle Crashes 19
 - Active Threat/Shooter..... 19
 - Additional Emergency Management Information 19
- Evacuations 20
- Drills and Exercises..... 21
- Emergency Response and Resource Distances..... 22
- Code of Conduct and Student Diversion Program..... 23
- Safety on Campus..... 24
 - Hazardous or Unsafe Conditions 24
 - Student Residence Halls..... 24
 - Non-Residential Buildings 25
 - Daily Crime Log 25
- Crime Prevention Programs..... 26
 - Protect Yourself Through Prevention..... 26

TABLE OF CONTENTS

Protecting Your Possessions At Home.....27

Rules for Safety and Security in Student Residence Halls.....28

In Public Areas.....29

Sexual Assault Investigation and Prevention30

Reporting Sexual Assault.....30

Dating Violence, Domestic Violence and Sexual Assault Resources.....31

Academic and Living Situations32

Procedures for Campus Discipline for an Alleged Sexual Assault.....32

New Mexico Sex Offender Registry.....33

Victims’ Rights.....33

ENMU Victims’ Bill of Rights33

Sexual Violence Prevention Training.....33

Policies and Programs Concerning Alcohol and Drugs on Campus.....34

Alcohol on Campus.....34

Driving While Under the Influence of Intoxicating Liquor or Drugs (DWI).....34

Drugs.....34

Restrictions on Medical and Recreational Marijuana.....35

Restrictions on Advertising and Marketing of Marijuana and Cannabis Products.....36

Student Code of Conduct.....37

Missing Student Notification Policy37

Missing Student Emergency Contact37

Branch Campuses.....38

Clery Act Map.....39

ENMU-Portales Campus Crime Statistics40

Disclaimer.....42

Location Definitions.....43

Crime Definitions44

Guide to Clery Act Offenses in New Mexico.....47

Fire Safety Report.....55

Fire Safety Systems in Campus Residential Facilities.....55

Fire Drills.....56

Policies on Appliances, Smoking and Open Flames in Student Housing Facilities..56

Building Evacuation Procedures57

Fire Safety Education and Training58

How to Report a Fire58

Fire Log.....58

Residence Halls59

ENMU-Portales (Main) Campus

Fire Statistics60

Disclaimer61

A LETTER FROM DR. JOHNSTON



Eastern New Mexico University remains committed to providing a safe and secure learning and working environment for our students, faculty, and staff. Further, our commitment to transparency in reporting is evidenced by the 2025 Security and Fire Safety Report.

While no place is completely free of crime and unsafe conditions, we must all be vigilant to identify problems and opportunities to improve. ENMU is grateful to our Department of Public Safety and all who work daily to provide a safe working and living and learning environment.

I appreciate all who contributed to the compilation of this report. I ask that everyone take the time to review this report to remain informed. Finally, I ask that everyone do their part to help ENMU remain a safe campus focused on the health, well-being, and success of students and employees.

Dr. James Johnston | ENMU President
james.johnston@enmu.edu | 575.562.2121

A MESSAGE FROM THE CHIEF OF POLICE



Every year, the ENMU Department of Public Safety (ENMU DPS) publishes the Annual Security and Fire Safety Report in an effort to keep the community informed and to facilitate transparency.

The Annual Security and Fire Safety Report is designed to inform faculty, staff, students and citizens of our crime and fire statistics. This report also provides valuable information concerning University policies and procedures related to alcohol, drugs, sexual assault and general safety at ENMU. I hope you will take the time to educate yourself and view this important information.

Students, faculty and staff are more likely to succeed in an educational environment in which they have a vested interest. Our campus community is no different, and we need your help. As a progressive community-oriented law enforcement agency, ENMU DPS cannot accomplish anything without the continued support of the community we serve. We ask for your assistance in making the ENMU campus safer and more secure by providing us with an extra set of “eyes and ears.” Please do not hesitate to report crimes you believe have been committed and please do not hesitate to contact us with any questions you may have.

ENMU DPS is committed to partnerships with our community and dedicated to providing excellent service.

Bradley D. Mauldin | ENMU Chief of Police
bradley.mauldin@enmu.edu | 575.562.2392



ANNUAL SECURITY AND FIRE SAFETY REPORT

The ENMU Department of Public Safety (ENMU DPS), in cooperation with other entities on the ENMU-Portales campus (including Student Affairs, Housing and Residence Life, Counseling and Career Services, Campus Life and other campus security authorities), prepares this report annually by Oct. 1 of each year to comply with the Jeanne Clery Disclosure of Campus Security Policy and Campus Crime Statistics Act (Clery Act). Each of these organizations provides crime data, updated policy information, educational efforts, student services and information about crime prevention for this report to comply with the act.

This report contains statistics covering the previous three years concerning campus security, fire safety and policies regarding sexual assault, alcohol and drug use. This report is distributed to every member of the campus community via the ENMU website at enmu.edu/SafetySecurity.

Anyone, including prospective students, visitors and employees, may obtain a paper copy of this report by contacting ENMU DPS at **575.562.2392**. For more information on the Jeanne Clery Disclosure of Campus Security Policy and Campus Crime Statistics Act, please visit the Clery Center for Security on Campus at CleryCenter.org.

ENMU Department of Public Safety

ENMU DPS is authorized to employ seven police officers, one of which may serve as a detective. The department is led by a chief of police with assistance from a captain and sergeant. The chief serves as the director of public safety and the chief law enforcement officer for ENMU-Portales and ENMU DPS.

ENMU police officers and their supervisors within the department are duly sworn and commissioned law enforcement officers with law enforcement authority in the state of New Mexico. Police officers certified in the state of New Mexico are required to maintain the same skills, training and qualifications regardless of the jurisdiction they serve. In many cases, our police officers receive additional specialized training to better serve the campus community. ENMU DPS additionally employs approximately seven student security officers, seven student administrative assistants, one student safety inspector, one safety officer/compliance coordinator and a public safety support specialist.

ENMU provides law enforcement services 24 hours per day, seven days per week. General business hours for ENMU DPS are Monday—Friday, from 8 a.m. to 5 p.m., excluding ENMU-Portales holidays, closures and delays. ENMU DPS can be contacted during general business hours at their non-emergency number, **575.562.2392**. Police officers can be reached directly after hours by calling the after-hours non-emergency number, **575.760.2945**.

Individuals should call 911 in all instances of an actual emergency.

ENMU DPS Vision and Mission Statements

Vision Statement

The Eastern New Mexico University Department of Public Safety is committed to providing the highest quality of police, protective and public safety services to the ENMU-Portales campus. We will strive to be a progressive community-oriented public safety organization that is constantly aware of developing trends and best practices. We will better our campus through community partnerships, problem-solving strategies, innovation, creativity, and adaptability to an ever-changing environment and a servant leadership style with highly trained, disciplined employees using the latest technology.

Mission Statement

The mission of the Eastern New Mexico University Department of Public Safety is to facilitate a positive and productive environment through proactive education, compliance initiatives and community partnerships so that the effects of hazards, crime and unplanned emergencies are minimized to allow the academic climate of the University to flourish.

What You Can Expect from ENMU DPS

- To be treated with professionalism
- To have confidentiality maintained to the extent allowed by law and ENMU System policy
- To have criminal and/or ENMU-Portales proceedings fully explained
- To receive referral information for support from student and academic services
- To have access to thorough, unbiased investigative services
- To have timely investigative follow-up provided

ENMU DPS Services

- Respond to all police, fire and medical emergencies on campus
- Investigate traffic crashes and all criminal offenses on campus
- Assist victims of crime by referring them to the appropriate resources for support
- Monitor panic, fire and intrusion alarms
- Provide security consultation to the campus community
- Coordinate special events on campus such as athletic games or commencement
- Provide electronic fingerprinting
- Provide scheduled and specially requested educational courses to campus

Cooperation and Commitment to Safety and Security

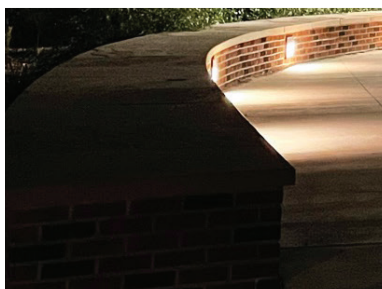
The ENMU System places a high priority on the personal safety of its students, faculty, staff and visitors. ENMU DPS is committed to providing the campus community with a tranquil and safe learning, working and living environment. Through cooperation with the vice president for Student Affairs, ENMU DPS utilizes a campus network of individuals to assist crime victims and those individuals who are affected by crime and/or tragedy. ENMU DPS also utilizes the services of the Roosevelt County 9th Judicial District Attorney's Office Victims' Advocacy Program to assist victims through the criminal justice process, in addition to offering information on community resources.

Working Relationships with Other Law Enforcement Agencies

ENMU DPS maintains a close working relationship with all law enforcement agencies. The most predominate are the Portales Police Department, Roosevelt County Sheriff's Office, New Mexico State Police and 9th Judicial District Attorney's Office. Formal and informal intergovernmental agreements allow us to work together on a daily basis as well as in unusual emergency situations.

Due to the complexity of many investigations, it is important for ENMU DPS law enforcement personnel to work closely with all law enforcement and criminal justice agencies. When an ENMU-Portales student is involved in an off-campus offense, ENMU police officers may assist with the investigation in cooperation with local, state or federal law enforcement. While the Portales Police Department has primary jurisdiction in areas off-campus in the City of Portales, ENMU police officers may respond to student-related incidents that occur in close proximity to campus or incidents where they are requested for assistance by other agencies.

ENMU DPS has direct radio communication with the Portales Police Department, Roosevelt County Sheriff's Office, New Mexico State Police, Portales Fire Department and Emergency Medical Services to facilitate rapid response in any emergency situation. We are pleased our working relationships at the federal, state and local levels continue to serve the campus community.



HOW TO REPORT A CRIME OR EMERGENCY

Dial 911 for any police, fire or medical emergency.

ENMU police officers will respond to all reported crimes and emergencies that occur at ENMU-Portales. ENMU police officers will take necessary reporting steps and enforcement action for criminal offenses that occur on the ENMU-Portales campus or adjacent public roadways. Prompt reporting enhances campus safety and security. ENMU DPS is located on the northeast corner of West 3rd Street and South Avenue K at 229 S Ave K.

ENMU is provided with law enforcement services 24 hours per day, seven days per week regardless of ENMU-Portales holidays, closures and delays. Business operations for ENMU DPS are Monday through Friday, from 8 a.m. to 5 p.m.

Fingerprinting is usually available on Tuesdays and Thursdays, from 8 a.m. to 4 p.m. The ENMU DPS support specialist may require appointments to be scheduled in an effort to minimize exposure due to COVID-19.

Non-emergency crime reports can be made by dialing **575.562.2392** or the after-hours number at **575.760.2945**.

For all emergencies, dial 911.

If several incidents are generated at or around the same time, priority is given to reports of incidents that are a threat to human life and/or disrupt the peace and mission of ENMU-Portales.

When to Call 911

Calling 911 can be an important step in bystander intervention that can protect human life!

- If you see someone who is believed to be heavily intoxicated or incoherent
- If someone is currently being or is suspected of being victimized by dating violence, domestic violence or sexual assault
- If someone is injured or ill
- If you see fire or smell smoke
- If you see someone being hurt
- If you see anything suspicious
- If you see someone stealing or damaging something
- If you see a drunk driver
- Any other emergency

Call quickly! Do not assume someone else has made the call. Try to provide the dispatcher with accurate and detailed information about the problem. Stay on the telephone until the dispatcher or police officer tells you it is okay to hang up. Your information will be relayed to the emergency personnel who are on their way to assist.

If you are reporting a medical problem, ask someone to monitor the victim's condition so you can relay the information to the dispatcher. The dispatcher will forward 911 calls.

Voluntary, Confidential Reporting

ENMU DPS encourages the reporting of all crimes. Without these reports, crime trends and problem areas on campus cannot be identified. ENMU DPS encourages anyone who is the victim or witness of any crime to promptly report the incident to the police.

Because police reports are public records under state law, ENMU DPS cannot hold reports of crimes in confidence. If you are a victim of a crime within the jurisdiction of ENMU-Portales and do not want to pursue action within the criminal justice system or the ENMU-Portales judicial system, you are still encouraged to report the incident to a University official so it can be included in annual statistics.

These University officials who are also Campus Security Authorities can report incidents to meet their mandatory reporting requirement by submitting an online Campus Security Authority Form through self-service banner so the information can be included in annual crimes statistics and for the purpose of updating the daily crime log.

Pastoral and professional counselors, when acting as such, are not required to report crimes for inclusion in the annual crime statistics. Pastoral and professional counselors are encouraged, if and when they deem appropriate, to inform persons being counseled of the procedures to report crimes on a voluntary, confidential basis for inclusion in the annual crime statistics.

You can contact ENMU DPS at **575.562.2392** to report a crime anonymously. Incident reports will be generated from anonymous reports regarding criminal activity and it will be included in our campus criminal activity statistics.

You can also call the Roosevelt County Crime Stoppers at **575.356.8100**, which allows for anonymous reporting on non-recorded phone lines. This organization assists local law enforcement agencies in the fight against crime.

Please understand that University officials can only provide confidentiality to the extent allowable by law and University policy. Information related to administrative investigations will only be distributed on a "need to know" basis.

It is important for students, employees and visitors of the ENMU-Portales campus to report criminal activity or emergency situations. Failing to report criminal activity or emergency situations can inhibit timely warnings, emergency notifications and the safety of others.

Obtaining Copies of Police Reports from ENMU DPS

Copies of police reports may be obtained from ENMU DPS during normal business hours. These hours are Monday through Friday, from 8 a.m. to 5 p.m., excluding holidays, campus closures and delays. There is a nominal fee for copies of police reports and documents. The fees associated with copies of police reports or other

documents do not apply to reported victims of criminal offenses. Individuals wishing to obtain a copy of a police report must complete an official request for public information which may be obtained at ENMU DPS.

Preferred Campus Security Authorities

Occasions may arise where an individual is uncomfortable reporting a hazardous condition, security-related issue or crime to the police personnel. ENMU has outlined a list of preferred Campus Security Authorities (CSAs). These CSAs are also members of the Behavior Intervention Team (BIT) at the ENMU-Portales campus. Individuals may report to any CSA on campus, but reporting matters to one of the following preferred CSAs has a greater probability of increasing response time and improving communication.

Dr. Christy Johanson

Vice President for Student Affairs
Student Academic Services (SAS),
Room 194
575.562.2221

Steve Estock

Assistant Vice President for Student
Affairs and Residence Life
Campus Union (CUB), Room 108
575.562.2632

Bradley Mauldin

Director of Public Safety
Department of Public Safety (DPS),
Director's Office
575.562.2392

Susan Cramp

Director of Advising Center
Student Academic Services (SAS),
Room 214
575.562.2338

Brent Small

Director of Financial Aid
Student Academic Services (SAS),
Room 107
575.562.2194

Susan Larsen

Director of Counseling and Career Services
Student Academic Services (SAS),
Room 232
575.562.2211

Vee Lucas

Coordinator of Accessibility Resources
Student Academic Services (SAS),
Room 186
575.562.2280

MASS NOTIFICATION SYSTEMS

Mass notification systems such as ENMU Alert perform critical functions designed to provide the ENMU-Portales campus community with information necessary to make informed decisions about the health and safety of students, faculty, staff and visitors of the ENMU-Portales campus. ENMU distinguishes between two different types of mass notifications which are timely warning notices and emergency notifications:

- Timely warning notices will be issued when a Clery Act reportable crime is reported to have occurred on or within the ENMU Clery Act geography that is determined to represent a serious or continuing threat to the campus community.
- Emergency notifications will be issued upon report of or confirmation of a significant emergency or dangerous situation involving an immediate threat to the health or safety of students, faculty, staff or visitors occurring on or near the ENMU-Portales campus.

ENMU Alert is not reserved for timely warning notices and emergency notifications. Important information may be sent out through mass notification systems such as University closures. This is done to ensure messaging systems are operational and regularly tested. A message sent through ENMU Alert to the ENMU-Portales campus community may be prefaced with the following:

ENMU INFO: Data or information that is useful context for situations that might affect or will affect the ENMU-Portales campus. Examples would include, but are not limited to:

- University closure
- University weather delay
- Construction or parking lot closure

Example ENMU INFO Message:

ENMU INFO: The ENMU-Portales campus will be on a two-hour weather delay this morning. Personnel will need to report to work by 10 a.m. and scheduled courses will begin.

ENMU ALERT: Data or information that may soon require action by those addressed. Examples would include, but are not limited to:

- Tornado watch (weather conditions in our area indicate an increased risk for severe weather that may be capable of producing a tornado)
- Utility outage
- Flooding
- Hazardous road conditions
- Sexual assault(s) occurred where suspect has not be identified

Example ENMU ALERT Message:

ENMU ALERT: A tornado watch has been issued for Roosevelt County. A tornado watch is issued when weather conditions or thunderstorms in our area indicate an increased risk for severe weather that may be capable of producing a tornado.

ENMU ACTION: Message or information that requires immediate decision(s), response(s) or action(s) by those addressed to enhance their safety and survival. Examples would include, but are not limited to:

- Tornado warning (tornado has been sighted or indicated by weather radar in our area)
- Complete evacuation of campus
- Bomb threat
- Active threat/shooter on or near campus
- Gas leak
- Hazardous material spill
- Pandemic or outbreak of meningitis, norovirus or other serious illness identified

Example ENMU ACTION Message:

ENMU Action: A tornado warning has been issued for our area. Take shelter and action immediately. A tornado warning is issued when a tornado has been sighted or indicated by weather radar in our area.

What is an Emergency Notification?

The ENMU-Portales campus will notify the campus community upon confirmation of a significant emergency or dangerous situation involving immediate threat to the health or safety of students or staff occurring “on campus.” The ENMU-Portales campus will provide adequate follow-up information to the campus community as needed. Emergency notifications (immediate notifications) are different from timely warning notices and may or may not involve criminal activity. Such notification may include, but are not limited to:

- Active shooter on campus
- Hostage/barricaded subject situation
- Riot
- Tornado warning
- Explosion
- Hazardous materials spill

TIMELY WARNINGS AND EMERGENCY NOTIFICATIONS TO CAMPUS

ENMU's highest priority is ensuring the health, safety and well-being of people on and off campus. It is ENMU policy to provide students, employees and other campus users with information about campus emergency situations and criminal activity that represents an ongoing threat in the most timely, effective and accurate manner as is reasonably possible under the circumstances.

Multiple notifications to the campus community are made through a coordinated effort of University departments. These methods include, but are not limited to:

- The ENMU Alert text messaging system
- The all-campus email system
- Desktop take over
- The ENMU information line
- Social media
- The ENMU website (enmu.edu)

These methods enhance the University's ability to provide timely warning notices and emergency notifications of any emergency issues that the University community may face. Timely warning notices and emergency notifications are issued through a coordinated effort from Information Technology Services (ITS), the Office of Communication Services and ENMU DPS.

In short, ITS is responsible for maintaining all software, hardware and systems utilized to disseminate timely warning notices and emergency notifications. Communication Services is responsible for sending and updating timely warning notices and emergency notifications. And select personnel of ENMU DPS serve as alternates for the purpose of sending and updating timely warning notices and emergency notifications.

ENMU DPS is additionally responsible for relaying important and critical information to Communication Services so timely warning notices and emergency notifications can be sent and updated.

Timely Warning Notice

What is a timely warning notice? In order to keep the campus community informed about safety and security issues on an ongoing basis, the ENMU System must alert the campus community of certain crimes in a manner that is timely and will aid in the prevention of similar crimes. These timely warning notices should be issued as soon as pertinent information is available regarding Clery Act reportable offenses that represent a serious or continuing threat when reported to a Campus Security Authority (CSA), local law enforcement or ENMU DPS law enforcement personnel that occurred in the Clery Act reportable geographic areas.

Determining the Need for a Timely Warning Notice

ENMU will determine the need for a timely warning notice and employ the appropriate communication methods to notify the University community of an ongoing criminal threat immediately. For all campus emergency and law enforcement issues, ENMU DPS will be primarily responsible for confirming a significant public safety situation on campus. This information will be conveyed to Communication Services without unnecessary delay. ENMU DPS has the discretion to activate mass notification systems at the ENMU-Portales campus. Mass notification systems will be updated concerning all significant incidents as information becomes available. Each incident or series of incidents will be evaluated based upon the totality of the circumstances surrounding pertinent information that is available at the time.

The following is criteria that may increase the likelihood that a timely warning notice will be issued to the campus community:

- A recognized pattern or continuation of criminal activity has been identified regarding Clery Act reportable crimes within our geographic area.
- A violent Clery Act reportable offense in which the suspect is still at large and represents a serious or continuing threat to students and employees of the ENMU-Portales (Main) campus.
- Additional threats to persons or property that are not outlined by the Clery Act which may not be within the Clery Act geographic area of the ENMU-Portales campus.

The following is criteria that may decrease the likelihood that a timely warning notice will be issued to the campus community:

- Delayed report of a Clery Act reportable crime that does not further establish a pattern or continuation of criminal activity.
- Report of a Clery Act reportable crime that a reasonable person would believe no longer represents a serious or continuing threat to students or employees.
- No pattern or continuation of criminal activity regarding non-violent Clery Act reportable crimes such as burglary or motor vehicle theft.
- Suspect involved in the Clery Act reportable crime has been arrested without unnecessary delay and has been given criminal trespass warnings for the ENMU-Portales campus.
- Suspect involved in the Clery Act reportable crime has been placed into custody without unnecessary delay with a detainer from Immigration and Customs Enforcement or any other entity operating under the auspices of the United States Department of Homeland Security.
- Suspect has been given interim sanctions in the form of interim suspension which involve criminal trespass warnings.

Each Clery Act reportable offense will be evaluated on a case-by-case and individual basis.

Determining the Content of a Timely Warning Notice

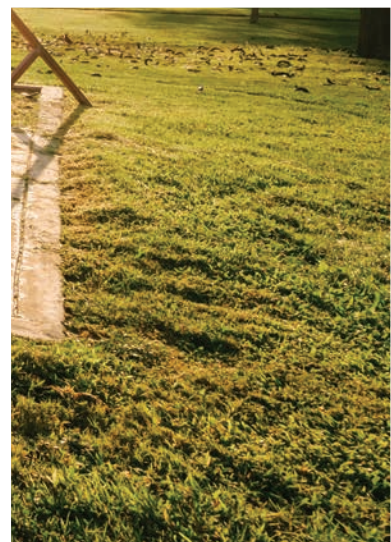
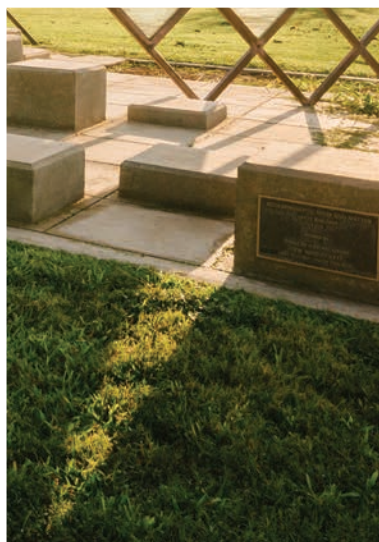
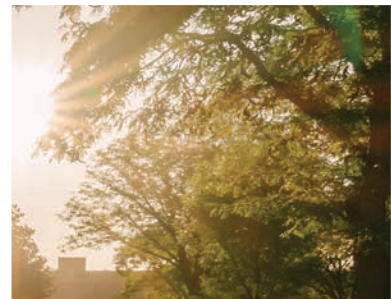
The content of a timely warning or emergency notification must be short, concise, understandable and as location-specific as possible. If necessary, multiple messages may be sent to explain a situation. A message will include information that would enable members of the campus community to take appropriate action(s) to protect themselves. The primary mass notification systems are operated and controlled by ITS, Communication Services and ENMU DPS.

Disseminating Information to the Campus Community

A timely warning notice is distributed to the campus community when pertinent information is available about a Clery Act reportable crime or series of crimes that occurred in a Clery Act reportable geographic area that would reasonably represent a serious or continuing threat to students and employees of the ENMU-Portales (Main) campus.

All ENMU Alert messages will be sent to all campus members and visitors who were automatically signed up and/or who have signed up for the ENMU Alert services and to all enmu.edu email accounts. Although a mass notification may not pertain to all campus members, the University has decided a campus-wide notification best serves the needs of the University community.

Several departments at the University are responsible for notifying the larger community regarding the situation. This is primarily the responsibility of Communications Services with cooperation and assistance of ITS and ENMU DPS. It is important for faculty, staff and students to utilize and frequently check their University email accounts and utilize campus resources. Registration for the ENMU Alert system and the City of Portales Hyper-Reach Alert system are incorporated in the new student registration process. More information about ENMU Alert can be found at enmu.edu/Alert. The City of Portales Hyper-Reach Alert registration site link can be found at PortalesNM.gov. ENMU DPS may also post specific Campus Safety Bulletins at enmu.edu/CampusSafetyBulletins.



EMERGENCY MANAGEMENT

The ENMU System Emergency Operations Plan (EOP) is available to students, faculty, staff and visitors at enmu.edu/EOP. A link to this document can also be found on ENMU DPS website at enmu.edu/EmergencyManagement. This document has useful information regarding ENMU System and ENMU-Portales operations during an emergency event. Some aspects and attachments to the plan are protected by the New Mexico Inspection of Public Records Act (IPRA) as they contain tactical response plans or procedures prepared for or by the state or a political subdivision of the state, the publication of which could reveal specific vulnerabilities, risk assessments or tactical emergency security procedures that could be used to facilitate the planning or execution of a terrorist attack pursuant to the provisions of 14-2-1A.(7) NMSA 1978.

Important resources related to emergency management can be found at the Federal Emergency Management Agency (FEMA) website at [FEMA.gov](https://www.fema.gov). You can search items related to emergency management which include, but are not limited to tornados, thunderstorms, active shooters and flooding. ENMU-Portales also provides an Emergency Survival Guide for quick reference at enmu.edu/EmergencySurvivalGuide.

WHAT TO DO IN AN EMERGENCY

Fire Alarms

If you hear a fire alarm, you must leave the building immediately. In multi-story buildings, do not use the elevator; exit via the stairway. Be cooperative with all staff members and other authorities. Do not re-enter the building until you are given permission to do so by a police officer, firefighter or building representative.

Bomb Threat

If you receive a bomb threat or hear of a bomb threat, notify the police immediately by dialing 911. Be as specific as possible when relaying information to dispatch about what the caller said, how they sounded, background noise, etc. Evacuate on your own or as instructed.

Severe Weather

One of the best sources for weather in Roosevelt County is the National Weather Service at [weather.gov](https://www.weather.gov).

Medical Emergencies

Students, faculty and staff are also encouraged to register for the ENMU Emergency Notification System and the City of Portales Emergency Notification System Medical Emergencies. Call 911 for any situation requiring emergency medical assistance on campus and relay necessary information to a dispatcher.

Motor Vehicle and Bicycle Crashes

State statutes require that the police are notified of any motor vehicle crash resulting in injury or property damage in excess of \$500. Individuals failing to report can be criminally charged and delayed crash reports may limit law enforcement response.

Active Threat/Shooter

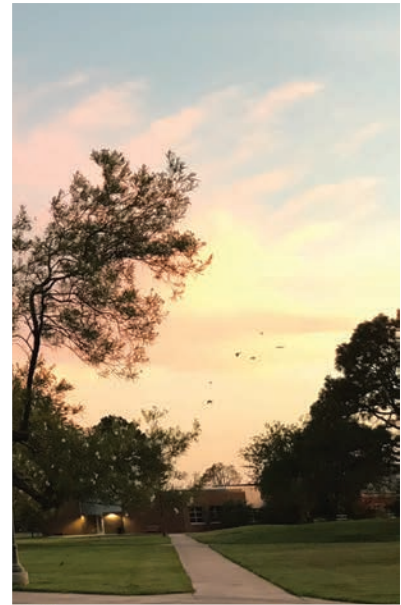
ENMU has adopted the A.L.I.C.E. program to teach the proactive measures people can take when faced with an assailant entering a building or classroom. A.L.I.C.E. stands for Alert, Lockdown, Inform, Counter and Evacuate, and encourages community members to take an active role in their own safety. The A.L.I.C.E. program teaches you how to utilize strategies proven to work best during such incidents, and how to maximize the available information to make the best decision for your situation. For more information, please visit enmu.edu/ALICE.

Additional Emergency Management Information

You can find additional emergency management information at enmu.edu/EmergencyManagement.

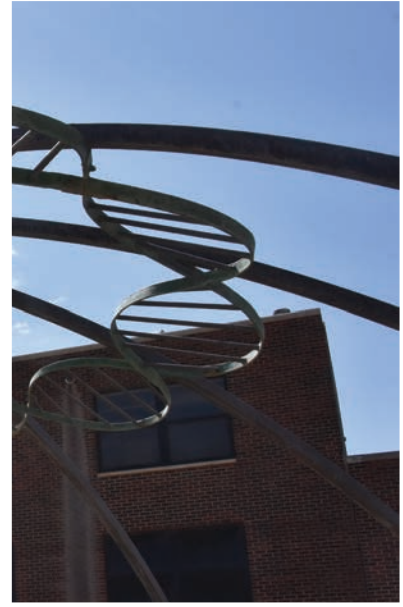
For police, fire or medical emergency, dial 911.

EVACUATIONS



EVACUATIONS

When notice is made to evacuate a building, leave the building right away in an orderly manner using established evacuation routes and stairs. **Do not** use the elevators. Take immediately available personal items with you (i.e. necessary medications, purses, backpacks, etc.), as these items may not be available to you for some time. **Do not** go back into a building to retrieve personal items. Go to your pre-determined gathering point or remain at a distance of at least 100 feet from the building. Follow all orders from authorized persons. **Do not** re-enter the building until directed to do so by emergency response personnel.



DRILLS AND EXERCISES

DRILLS AND EXERCISES

ENMU Alert is not reserved for emergency notifications. Important University information may be sent out on the ENMU Alert system, such as University closures. This is done to ensure the text messaging is operational and tested. The ENMU Emergency Planning Committee will exercise the emergency response plan by seminar, tabletop exercise, drill, functional exercise or full scale exercise. An after-action meeting will take place following an exercise to identify areas for improvement, strengths and any corrective actions to be taken.



EMERGENCY RESPONSE AND RESOURCE DISTANCES

ENMU DPS

229 South Avenue K, Portales, NM is at the ENMU-Portales campus and available 24/7

Portales Fire Department

301 South Avenue C, Portales, NM is about 0.64 miles from ENMU

Roosevelt General Hospital

42121 U.S. Highway 70, Portales, NM is about 0.95 miles from ENMU

Portales Police Department

42427 US 70, Portales, NM is about 2.1 miles from ENMU

Roosevelt County Sheriff's Office

1700 N Boston, Portales, NM is about 1.6 miles from ENMU



CODE OF CONDUCT AND STUDENT DIVERSION PROGRAM

Any violation of state or federal law on campus is also a violation of the ENMU Student Code of Conduct. A criminal action and a Student Code of Conduct violation may occur simultaneously, but are two independent actions. Any individual may file a Student Code of Conduct complaint with the vice president for Student Affairs for violations that occur under the authority of the Student Code of Conduct. The complete Student Code of Conduct is available online at enmu.edu/CodeOfConduct. For specific information, please contact the vice president for Student Affairs at **575.562.2221**.

SAFETY ON CAMPUS

The ENMU-Portales campus usually has between 4,000 and 6,000 students and approximately 340 employees. On average, ENMU-Portales has a daily population of approximately 3,500 people. While the ENMU-Portales campus is generally quite safe, it is not isolated from the problems of personal safety, theft and other crimes. Everyone on campus is expected to obey the laws of the state of New Mexico as well as all the rules and regulations of the University. If you would like additional information about safety and security, you are encouraged to contact ENMU DPS at **575.562.2392**.

Most campus buildings and facilities are accessible to members of the campus community, guests and visitors during normal business hours, Monday through Friday, excluding holidays and University closures. Certain facilities may also be open for designated periods of time during weekends, holiday or during special events.

Hazardous or Unsafe Conditions

ENMU DPS and the Physical Plant are ever vigilant to identify areas of concern with respect to building security, lighting, landscaping and other potential safety and security issues. To schedule a site visit for your building, call **575.562.2392**. Lighting and safety hazards identified during routine patrol of the campus are forwarded on an ongoing basis to the ENMU Physical Plant. We encourage community members to promptly report any security concerns to ENMU DPS at **575.562.2392**. Employees of ENMU are also strongly encouraged to report issues related to maintenance (such as lights being out, broken sprinklers, faded curb paint, etc.) to a supervisor so a work order can be placed with the ENMU Physical Plant to have the issue properly addressed. Students, faculty, staff and members of the general public can report hazardous or unsafe conditions by filling out a Hazardous or Unsafe Condition Report at enmu.edu/UnsafeConditionReport.

Student Residence Halls

Access to residence halls is restricted to residents, their approved guests and other approved members of the University community. All exterior doors of residence halls controlled by access control systems are locked day and night. Residents gain entry by swiping their student ID cards against card access readers. Residents are cautioned against permitting strangers to enter residential halls on campus and are urged to require individuals seeking entry to use their own access cards. Additionally, residents are asked to ensure that exterior doors are not propped open or left ajar.

ENMU police officers actively patrol the residence halls on a regular basis. Hall directors and other housing staff also enforce security measures in residence halls and work with residents to achieve a community respectful of individual and group rights and responsibilities. Housing staff regularly conduct periodic educational sessions for student residents.

Non-Residential Buildings

The ENMU-Portales campus maintains over 50 buildings. Academic and administrative buildings are generally open to the public during normal business hours from 8 a.m. to 5 p.m. Monday through Friday. Some facilities have extended hours of operation that may vary throughout the year. Access to some of these buildings is controlled by card access after normal business hours. All facilities at the ENMU-Portales campus have varied levels of access and access control. ENMU police officers regularly patrol facilities on campus.

Daily Crime Log

A daily log documenting all incidents reported to ENMU DPS is kept in accordance with the Higher Education Opportunity Act. You will find crime information including when a crime was reported, when it occurred, the location and description of the crime. The logs can be accessed and provided to you at ENMU DPS upon request.



CRIME PREVENTION PROGRAMS

You can help prevent crime by being aware of your environment and remaining alert to situations that could make you vulnerable to crime. There are a number of resources throughout the University campus to enhance the safety and well-being of students, faculty, staff and visitors. Throughout the year, ENMU DPS presents a number of crime prevention programs to a wide variety of groups, both on and off campus. Program topics range from alcohol and drug use, sexual assault, personal and property safety and self-defense training. ENMU DPS is committed to meeting the needs of the community by presenting these programs. To schedule a crime prevention program, contact ENMU DPS at **575.562.2392**.

Protect Yourself Through Prevention

We cannot list specific measures that will protect you from every threatening situation that may arise. However, we hope to teach you how to think “crime prevention” in day-to-day living. The suggestions presented should not be thought of as a list of crime prevention measures, but rather as examples of common-sense behavior that will help you to make life safer and more secure.

Lock the door to your apartment or residence hall when you are alone, asleep or out of the room.

Do not open your door to strangers. If your door has a peephole, use it to identify visitors before allowing access. Report any problems with your door’s security devices immediately to your hall director or apartment manager.

Do not give your name, address, phone number or other personal information to strangers. If you have your name published in the local telephone directory, use only initials and do not list your address.

When going out, let your roommate, a friend or a staff member know where you are going, with whom and when you expect to return. If you choose to stay out later, call that person and let them know.

At night, travel with others in well-lit areas. Avoid taking shortcuts through dark or deserted areas.

Utilize services which provide added safety. There are safe, free and easy ways to travel between ENMU buildings and parking lots during the evening hours. ENMU police officers will walk you to your vehicle or give you a ride from the ENMU-Portales Campus to your residence within a reasonable distance to the University if you feel unsafe. ENMU DPS can be reached at **575.562.2392**.

Walk facing traffic whenever possible. This increases awareness of potential traffic hazards and also reduces the possibility of being followed by someone in a vehicle. Avoid walking by the curb near buildings or shrubbery. Walk in the middle of the sidewalk with confidence and don’t be afraid to make eye contact or look at suspicious individuals you encounter.

If you feel threatened or suspect that you are being followed, call **911** and walk toward lighted areas where there are people. Look over your shoulder frequently. This lets the follower know that you are aware of both his/her presence and your surroundings. With current technology it may be possible for you to discretely record this encounter with audio and/or video.

Drugs and alcohol can severely impact your ability to think critically to protect yourself. They can also lower your inhibition and make you vulnerable. The best option is to abstain from using any drugs or alcohol.

Protecting Your Possessions At Home

Lock your door when you are away from your room, apartment or house. Most thefts and burglaries of students' rooms occur when the doors remain unlocked. Remember that it takes less than 30 seconds to get "ripped off."

Keep windows closed and locked when away from your room or your apartment. This protects your belongings from both theft and Portales' inclement weather.

Keep a record of the serial numbers for all your belongings. Items of value that do not have a serial number should be engraved with some personal identification number such as a driver's license number and photographed.

Do not advertise your valuables. Keep them out of sight. Arrange your room so that high-risk items such as televisions and cameras are not visible from the hallway when the door is open or from ground-level windows.

Items of high monetary value that have minimal use in a University environment such as expensive jewelry, personal or family mementos or collections of any kind should be left at home. Very expensive items should be stored in a safe deposit box at your bank.

Do not keep large sums of cash in your room or apartment. A debit card or checking account is safer than cash. Remember to keep your checks in a secure place. Do not talk indiscriminately about receiving money. There is no need to advertise to potential thieves.

Insurance in residence halls covers the institution's property only. Residents are encouraged to provide their own insurance against loss of, or damage to, personal possessions. If your family has homeowner's insurance, check with your family agent about coverage. There are a variety of renter's policies available from insurance carriers for apartment dwellers.

Rules for Safety and Security in Student Residence Halls

Specific student housing rules and procedures have been developed and implemented by the ENMU Office of Housing and Residence Life to make your building a safe and secure home. The following are examples of some important rules designed to enhance the safety and security of residents:

During night hours, always leave and enter through the main entrance.

Never let guests into the building through any door other than the main entrance.

Never admit uninvited non-residents into the building.

Do not let strangers into the building as your guests.

Report any suspicious, unescorted person or stranger immediately. You do not need to contact a staff member prior to calling the police in such a case.

Do not lend the keys to your room, proximity device or your student identification card to anyone.

Under no circumstances should you prop open any exterior door. Although it may seem harmless and convenient, you are endangering both yourself and everyone else. The exterior doors are locked for your safety. Interior fire doors should not be propped open as well. Doing so eliminates their effectiveness in preventing the spread of fire or smoke.

Motorcycles, firearms, fireworks and pets are prohibited in residence halls. For further information contact Housing and Residence Life at **575.562.2632**.

Never go onto the top of buildings or ledges outside your window. Seemingly harmless activities can lead to unforeseen injury or damage.

Lock your car and take the keys with you. Many car burglaries and thefts occur because the owner did not take time to secure the car. Don't make your car a target of opportunity.

When riding in a car, keep the doors locked. Park in the most lighted area you can find. Upon returning to your car, have your keys ready as you approach your vehicle. Check the back and front seats to make sure that the car is empty before you get in.

Do not park in isolated, dark places if these areas can be avoided. Park where there are people around and where the car will be lighted.

Do not leave valuable items unattended in your car. If you must leave valuable items in your car, place them in the locked trunk.

Do not pick up hitchhikers and do not hitchhike.

In Public Areas

Never leave your bicycle or moped unlocked and unattended. ENMU DPS recommends that bicycles and mopeds be secured with an oversized U-shaped bicycle lock.

Engrave your bicycle or moped with a personal identification number such as a driver's license number and keep a record of it with a description of the bike and serial number. You are also highly encouraged to register your bicycles with ENMU DPS. Bicycle registration is a way to aid in the recovery of your property if your bicycle is stolen.

Do not leave personal property unattended in public areas, such as the library, the Campus Union (CUB) and classrooms.

Do not carry more cash than you need. Avoid "flashing" your cash in public.

Be careful what you carry together. Do not carry both your identification and checks together in your wallet. Keep them separate. Also do not write your PIN number down in your wallet or on your card.

Carry your purse or backpack close to your body, and keep a tight grip on it.

Mark items you normally take to class, such as textbooks, backpacks and calculators, with either your name or personal identification number such as a driver's license number.

Keep a list of your credit cards, identification cards and checking account numbers. If they are stolen or lost, you will have a list of numbers to provide to the police. Remember you should also immediately contact all of the credit card companies and banks with which you do business.

SEXUAL ASSAULT INVESTIGATION AND PREVENTION

Law enforcement officers of ENMU DPS investigate all allegations of sexual assault reported to the department. If the assault occurred outside the jurisdictional responsibility of ENMU DPS, the University will assist the victim with notification and reporting to the proper law enforcement agency. When a report of sexual assault is received, an officer will immediately be dispatched to seek medical attention for the victim, investigate the crime and provide other assistance as needed. ENMU DPS utilizes the resources of Arise Sexual Assault Services when investigating sexual assaults, as well as a support-counseling network of University personnel. Victims of sexual assault who choose not to report incidents to law enforcement are still encouraged to utilize both University and non-University support services.

Reporting Sexual Assault

When Reporting Sexual Assault to the Police, Victims of Sexual Assault Should:

- Immediately go somewhere safe and report the crime by dialing 911.
- Tell the dispatcher if immediate medical attention is needed.
- Refrain from washing, bathing, showering or douching.
- Refrain from washing clothes or other items worn/used during the sexual assault.
- Show the officer where these items are located upon his/her arrival.
- Give a detailed depiction of the incident to assist officers with their investigation.

It is the victim who will decide if he/she wishes to pursue criminal charges. However, the University will investigate all reports of sexual assault. All members of the University community are encouraged to report incidents of sexual assault or abuse to the police. Our primary concern is for the victim's immediate and long-term well-being.

If the victim/reporting party does not wish to involve law enforcement, assistance and resources are available through the University to assist with counseling such as ENMU's Office of Counseling and Career Services in Student Academic Services (SAS), Room 232, **575.562.2211**. There is also an on-call emergency counseling number available for Counseling and Career Services, **575.607.5689**. **Counseling is also available via text at 575.825.1978.**

Additionally, programs are presented by Counseling and Career Services and ENMU DPS throughout the year to fraternities, sororities, residence halls, clubs, departments, freshmen seminar classes and organizations inside and outside of the University concerning sexual assault awareness and prevention.

Additional information can be found online at enmu.edu/TitleIX.

Dating Violence, Domestic Violence and Sexual Assault Resources

ENMU DPS (ENMU Police)

Location: 229 S Ave K
 Mailing address: ENMU Station 55
 1500 S Ave K
 Portales, NM 88130
 Business phone: 575.562.2392
 After hours: 575.760.2945

ENMU Counseling and Career Services

Location: Student Academic Services (SAS),
 Room 232
 Mailing address: ENMU Station 34
 1500 S Ave K
 Portales, NM 88130
 Business phone: 575.562.2211
 Emergency: 575.607.5689
 Counseling text line: 575.825.1978

Arise Sexual Assault Services

Location: 801 W 18th St
 Portales, NM 88130
 Business phone: 575.226.7263

ENMU System Title IX Coordinator

Location: Quay Hall (QH),
 Room 109
 Mailing address: ENMU Station 2
 1500 S Ave K
 Portales, NM 88130
 Business phone: 575.562.2235

Hartley House

Location: 900 North Main
 Clovis, NM 88101
 Business phone: 575.762.0050

Roosevelt General Hospital

Location: 42121 U.S.
 Highway 70
 Portales, NM 88130
 Business phone: 575.359.1800

9th Judicial District Attorney's Office Victims' Advocacy

Location: 205 South Main
 Portales, NM 88130

Magistrate Court

Location: 1630 North
 Boston Ave
 Portales, NM 88130
 Business phone: 575.356.8569

Roosevelt County District Court

Location: 109 West 1st St
 Portales, NM 88130
 Business phone: 575.359.6920

U.S. Department of Education Office for Civil Rights

Location: 400 Maryland
 Avenue, SW
 Washington, DC
 20202-1100
 Business Phone: 800.421.3481

Academic and Living Situations

By notifying the vice president for Student Affairs, the victim of an alleged sexual assault has the option to modify or change their academic and living situations, if those changes are reasonably available. The vice president for Student Affairs or their designee will assist victims of sexual assault with notification of law enforcement authorities.

Procedures for Campus Discipline for an Alleged Sexual Assault

Procedures for campus disciplinary action for an alleged sexual assault are located in the Eastern New Mexico University Student Handbook located at enmu.edu/StudentHandbook. The student disciplinary procedures provide the accuser and the accused with the same opportunities to have other persons present during a disciplinary proceeding. Additionally, both the accuser and the accused will be informed of the outcome of any University disciplinary proceeding alleging sexual assault. The vice president for Student Affairs or their designee may impose one or more of the following until an administrative investigation is completed.

- Mutual no-contact orders
- Temporary or location specific criminal trespass warnings
- Other safety and prevention steps as necessary under existing University rules

The vice president for Student Affairs or their designee may impose one or more of the following sanctions for violations of the Student Code of Conduct including sexual assault.

- Warning: A notice in writing to the student that the student is violating or has violated System regulations.
- Probation: A written reprimand for violation of specified regulations. Probation is for a designated period of time and includes the probability of more severe disciplinary sanctions if the student is found to be violating any System regulation(s) during the probationary period. Probation may carry loss of privileges including but not limited to the prohibition of holding any System office, representing ENMU at any function, or receiving System awards with the exception of academic scholarships for the period of probation.
- Loss of Privileges: Denial of specific privileges for a designated period of time.
- Fines: Fines may be imposed.
- Restitution: Compensation for loss, damage or injury. Restitution may take the form of appropriate service or monetary or material replacement.
- Discretionary Sanctions: Work assignments, service to the System or other related discretionary assignments. Such assignments must have prior approval of the Judicial Coordinator.
- Residence Hall Suspension: Separation of the student from the residence halls for a definite period of time, after which the student is eligible to return. Conditions of readmission may be specified. Refunds will follow the approved schedule of refunds and will be based on the date that disciplinary action was taken against that student. Deposits are not refundable.
- Residence Hall Expulsion: Permanent separation of the student from the residence halls.
- Suspension: Separation of the student from the System for a definite period of time, after which the student is eligible to return. Conditions for readmission may be specified.
- Expulsion: Permanent separation of the student from the System.
- Other sanctions permissible under existing University rules

New Mexico Sex Offender Registry

ENMU DPS operates a website where registered sexual offenders are listed by location. Should you wish to inquire whether a registered sexual offender is residing near the campus or your residence, go to enmu.edu/NMRegistry.

Victims' Rights

A victim in the state of New Mexico has a legal right to be treated with fairness, respect and dignity and to be free from intimidation, harassment or abuse throughout the criminal or juvenile justice process. All state, county and municipal criminal justice agencies and courts in New Mexico are required to perform certain duties to ensure your rights.

ENMU Victims' Bill of Rights

Victims of dating violence, domestic violence and/or sexual assault will have the right to the following:

- Reasonable changes to academic and living situations
- Referral to counseling, victims' advocacy and other resources
- Assistance in notifying law enforcement
- The same opportunity as the accused to have others present at any disciplinary hearing(s)
- Unconditional notification of the outcomes of hearings, sanctions and terms of sanction(s) in place
- Opportunity and assistance to speak or the choice not to speak to anyone regarding the incident or outcome
- Confidentiality to the extent allowable by law and University policy

Sexual Violence Prevention Training

ENMU has incorporated online sexual violence prevention, Title IX, and Clery Act training through EVERFI. The ENMU System Title IX Coordinator manages this system they can be reached at **575.562.2235**.

Training is available for students, non-supervisory personnel, and supervisory personnel.



POLICIES AND PROGRAMS CONCERNING ALCOHOL AND DRUGS ON CAMPUS

Eastern New Mexico University has a “Zero Tolerance” policy concerning alcohol and drugs on University property. This includes the usage, sale, possession, distribution, intoxication and consumption of these substances on University property. ENMU also has a drug-free workplace policy. Offenses concerning alcohol and drugs are taken seriously at ENMU and will not be tolerated. The only exception to this policy is University-approved tailgating locations during designated time frames.

Alcohol on Campus

New Mexico law prohibits the possession of alcoholic beverages by individuals under 21 years of age. In the state of New Mexico, it is a fourth-degree felony to sell, serve or give alcoholic beverages to any person under 21 years of age. The consumption of alcoholic beverages on University property is prohibited unless otherwise specified by University policy. The following acts are prohibited on University premises or at University sponsored activities:

- Distribution, possession or use of any alcoholic beverage outside of licensed premises
- Providing alcoholic beverages to individuals less than 21 years of age, or possession of alcoholic beverages by individuals less than 21 years of age
- Unlawful possession of an open container of an alcoholic beverage, driving under the influence of alcohol, driving with an open container and drinking in an unauthorized area

Driving While Under the Influence of Intoxicating Liquor or Drugs (DWI)

Criminal and potential administrative sanctions also apply to those individuals who operate a motor vehicle while under the influence of intoxicating alcohol or drugs. A person with a blood alcohol content (BAC) or breath alcohol content (BrAC) of 0.08 or greater is presumed to be impaired under state of New Mexico law. It is important to understand an individual can be convicted of DWI in the state of New Mexico with a BAC below a 0.08. Anyone driving with a BAC of .16 or higher is subject to being charged with aggravated DWI and enhanced sentencing if convicted.

Drugs

The production, distribution and use of drugs are strictly regulated by federal, state and local laws. Criminal sanctions imposed for violations are stringent. The possession of marijuana in any amount may result in criminal prosecution. Secondary civil consequences also may result from criminal drug violations. Property associated with the criminal acts (including homes and vehicles) can be confiscated by state or federal governments. Those who are convicted of felony violations may be barred from governmental employment and from licensed professions such as law, medicine and teaching. These are not all of the drug and alcohol related offenses and sanctions, but give a basic understanding of the serious legal and administrative sanctions that arise from unlawful possession, distribution and use of illicit drugs. Violations can result in both criminal and University disciplinary action. Services for faculty and staff are available through ENMU Human Resources at **575.562.2115**.

Restrictions on Medical and Recreational Marijuana

Although the state of New Mexico has passed laws legalizing medical and recreational marijuana, possession and/or use of medical or recreational marijuana remains prohibited anywhere on an ENMU System campus, including all University housing and facilities, and at all University events and activities. The ENMU System must comply with federal laws and regulations outlined in the Drug-Free Workplace Act, Drug-Free Schools and Communities Act and/or Controlled Substances Act.

As an institution of higher education that receives federal grants, contracts and funds for financial aid, the ENMU System is bound by certain federal laws and therefore must establish and enforce policies prohibiting the possession, manufacture, use and distribution of controlled substances by our employees, students or others within our control. Marijuana — including medical marijuana — is, by definition, a controlled substance and therefore unlawful under federal law.

New Mexico's passage of laws legalizing medical marijuana does not supersede or nullify federal laws regarding controlled substances. Therefore, possessing a medical marijuana card does not override the fact that marijuana is a controlled substance and unlawful on property which is owned, operated or controlled by the ENMU System.

The ENMU System will continue to enforce current policies, including the Student Code of Conduct, regarding controlled substances. Any student or employee who violates University policy prohibiting the manufacture, use or possession of illegal substances or drugs on campus will be subject to referral for disciplinary action, up to and including expulsion from school, termination of employment and if warranted, criminal prosecution.

If you have any questions or require additional information, please contact the following, as applicable:

Department of Public Safety: 575.562.2393

Office of Student Affairs: 575.562.2221

Office of Housing and Resident Life: 575.562.2632

Office of Human Resources: 575.562.2115

For more information regarding alcohol and drug policies, visit enmu.edu/DFSACA.

Restrictions on Advertising and Marketing of Marijuana and Cannabis Products

ENMU supports local businesses and economic development to the extent that compliance is maintained with local, state, and federal laws. Such strategic support includes maintaining alignment with the mission, vision, strategic plan(s), and spirit of ENMU as an institution of higher education. As part of its mission, ENMU regularly

STUDENT CODE OF CONDUCT

hosts children of varying ages, including its own Child Development Center Laboratory School for children between the ages of two (2) and (5) years old. ENMU is a hub for continuing education programs and fosters educational partnerships between regional K-12 school systems. Additionally, consistent census data reveals that an overwhelming majority of our on-campus student population is below twenty-one (21) years of age. As such, a business may be given permission to advertise a specific business in and of itself, but it shall be expressly prohibited for any business to advertise, market, or display any marijuana or cannabis products, including other products associated with controlled substances, on property owned, operated, or controlled by the ENMU System. The related prohibitions of advertising and marketing also extend to the depiction of subjective or objective imagery that would lead a reasonable and prudent person to believe what is being portrayed is representative of any organic or synthetic controlled substances or associated drug paraphernalia.

If you have any questions, please contact the following resource:

Office of Communication Service: **575.562.2123**.

For more information regarding alcohol and drug policies, visit enmu.edu/DFSACA.



STUDENT CODE OF CONDUCT

Students who violate local, state and federal laws or University policy will be subject to violations of the Student Code of Conduct found in the Student Handbook, enmu.edu/StudentHandbook. The Student Code of Conduct is also available at enmu.edu/CodeOfConduct.

MISSING STUDENT NOTIFICATION POLICY

Any student who lives on-campus and is believed to be missing must be reported to ENMU DPS. If you have good reason to believe that a resident student may be missing, immediately:

- Attempt to contact resident student who is believed to be missing.
- Contact ENMU DPS by calling **575.562.2392**, which, in turn, initiates their investigative procedures. Ask for the officer's name to report back to Housing and Residence Life staff.
- Contact a Housing and Residence Life staff member.
- Notify the vice president for Student Affairs, **575.562.2221**.

While the Clery Act reporting requirements only apply to students living in a residence hall, we encourage that any missing student be reported to the applicable law enforcement agency. In addition, please notify the vice president for Student Affairs at **575.562.2221**.

Missing Student Emergency Contact

All students living in campus housing must provide a confidential emergency contact to Housing and Residence Life upon checking into campus housing. The student's confidential contact information will be accessible only to authorized ENMU-Portales campus officials and law enforcement personnel, as necessary. Once it is determined that a student is missing, the institution "shall within 24 hours" notify an emergency contact identified by the student. If the missing student is younger than 18 years old and is not an emancipated minor, the institution must also notify his/her custodial parent or guardian, if different from their emergency contact(s).



BRANCH CAMPUSES

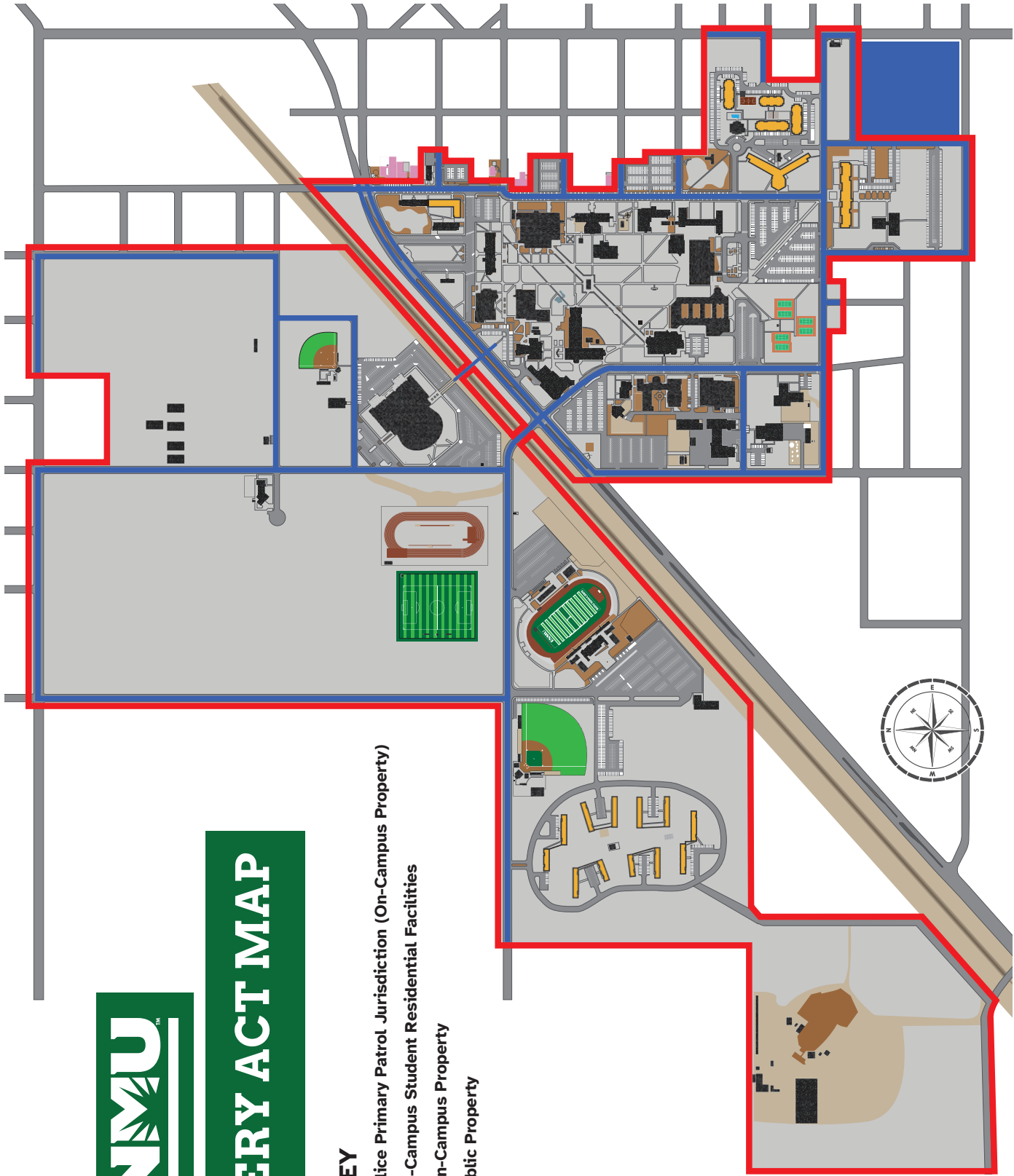
The safety and security of faculty, staff, students and visitors is of utmost importance on all ENMU System campuses. The ENMU System has two branch campuses in addition to ENMU-Portales. One of the branch campuses is located in Roswell, New Mexico. Resource information for this campus can be located at roswell.enmu.edu. The other branch campuses is located in Ruidoso, New Mexico. Resource information for this campus can be located at ruidoso.enmu.edu.

Branch campuses qualify as separate campuses under the Clery Act and are thus required to independently adhere to all of its requirements which pertain to the institution. While these campus fall under the ENMU System, they do have some autonomy due to their size, scope of responsibility, population and resource availability.

We encourage you to contact these two campuses through their web pages for more information regarding the institutions. ENMU criminal activity statistics are available at enmu.edu/CriminalActivity.

CLERY ACT MAP

CLERY ACT MAP



MAP KEY

- Police Primary Patrol Jurisdiction (On-Campus Property)
- On-Campus Student Residential Facilities
- Non-Campus Property
- Public Property



ENMU-PORTALES (MAIN) CAMPUS CRIME STATISTICS

ENMU-PORTALES CAMPUS CRIME STATISTICS

Previous Three Years

Offense	Year	On-Campus Property	*Residential Facilities	Non-Campus Property	Public Property	Total
Murder/ Non-Negligent Manslaughter	2022	0	0	0	0	0
	2023	0	0	0	0	0
	2024	0	0	0	0	0
Manslaughter by Negligence	2022	0	0	0	0	0
	2023	0	0	0	0	0
	2024	0	0	0	0	0
Rape	2022	1	0	0	0	1
	2023	2	2	0	0	2
	2024	1	1	0	0	1
Fondling	2022	0	0	0	0	0
	2023	0	0	0	0	0
	2024	0	0	0	0	0
Incest	2022	0	0	0	0	0
	2023	0	0	0	0	0
	2024	0	0	0	0	0
Statutory Rape	2022	0	0	0	0	0
	2023	0	0	0	0	0
	2024	0	0	0	0	0
Robbery	2022	0	0	0	0	0
	2023	0	0	0	0	0
	2024	0	0	0	0	0
Aggravated Assault	2022	0	0	0	0	0
	2023	0	0	0	0	0
	2024	1	0	0	0	1
Burglary	2022	1	1	0	0	1
	2023	7	3	0	0	7
	2024	1	1	0	0	1
Motor Vehicle Theft	2022	4	0	0	1	5
	2023	2	0	0	0	2
	2024	0	0	0	0	0
Arson	2022	0	0	0	0	0
	2023	0	0	0	0	0
	2024	0	0	0	0	0
Domestic Violence	2022	1	1	0	0	1
	2023	0	0	0	0	0
	2024	0	0	0	0	0
**Dating Violence	2022	N/A	N/A	N/A	N/A	N/A
	2023	N/A	N/A	N/A	N/A	N/A
	2024	N/A	N/A	N/A	N/A	N/A
Stalking	2022	0	0	0	0	0
	2023	0	0	0	0	0
	2024	0	0	0	0	0

* The ENMU-controlled residential facilities are all located on campus, so the incidents taking place therein are also included in the "On-Campus Property" column.

** Pursuant to the 34 CFR 668.46(a) Definitions, and the Federal Register, Volume 79, No. 202, page 62757, Column 3, ENMU includes all cases of 'dating violence' in the statistics for 'domestic violence', as New Mexico State Statutes already include dating violence in domestic violence violations and prosecutions. As a result, there are no cases of 'dating violence' listed individually as statistics.

***HATE CRIMES	Offense	Year	On-Campus Property	*Residential Facilities	Non-Campus Property	Public Property	Total	
	Offenses Motivated by Hate	2024	0	0	0	0	0	0
		2023	0	0	0	0	0	0
		2022	0	0	0	0	0	0

*** ENMU has not had any incidents of reported hate crimes within the reportable period. The chart will be expanded in the event of an incident occurrence.

CRIME STATUS	Status	Year	On-Campus Property	
	Unfounded Crimes	2024	0	
		2023	0	
		2022	0	

If a reported crime is investigated by law enforcement authorities and found to be false or baseless, meaning that the crime did not occur or was never attempted, the crime is “unfounded.” Only sworn or commissioned law enforcement personnel may designate crimes unfounded.

ARRESTS	Type	Year	On-Campus Property	*Residential Facilities	Non-Campus Property	Public Property	Total	
	Weapons: Carrying, Possession, etc.	2022	1	0	0	0	0	1
		2023	0	0	0	0	0	0
		2024	0	0	0	0	0	0
	Drug Abuse Violations	2022	2	2	0	0	0	2
		2023	5	5	0	0	0	5
		2024	6	6	0	0	0	6
	Liquor Law Violations	2022	1	1	0	0	0	1
		2023	2	1	0	0	0	2
		2024	15	13	0	9	0	24

REFERRALS	Type	Year	On-Campus Property	*Residential Facilities	Non-Campus Property	Public Property	Total	
	Weapons: Carrying, Possession, etc.	2022	1	1	0	0	0	1
		2023	0	0	0	0	0	0
		2024	0	0	0	0	0	0
	Drug Abuse Violations	2022	4	4	0	0	0	4
		2023	5	5	0	0	0	5
		2024	0	0	0	0	0	0
	Liquor Law Violations	2022	6	6	0	0	0	6
		2023	5	5	0	0	0	5
		2024	14	14	0	0	0	14

Disclaimer

This criminal activity report reflects crime statistics and arrest activity generated by the Eastern New Mexico University Department of Public Safety (ENMU DPS) and cooperating law enforcement agencies for incidents that occurred:

- (1) On campus,
- (2) On public property within or immediately adjacent to the campus, and
- (3) In or on non-campus buildings or property that our University owns or controls.

Data classified as “On-Campus Property” contains statistics for related incidents that took place on University property. Data classified as “Campus Residential Facilities” is a sub category of “On-Campus Property.” These statistics do not include activity generated by ENMU DPS that does not meet the above-mentioned location criteria and occurred within the primary jurisdiction of another law enforcement agency.



LOCATION DEFINITIONS

On-Campus Property – any building or property owned or controlled by an institution within the same reasonably contiguous geographic area and used by the institution in direct support of, or in a manner related to, the institution’s educational purposes.

Campus Residential Facilities – institutions must disclose the total number of crime incidents, including those in on-campus residential facilities. These statistics are a subset of the on-campus statistics not in addition to them.

Non-Campus Property – any building or property owned or controlled by a student organization that is officially recognized by the institution; or any building or property owned or controlled by an institution that is used in direct support of, or in relation to, the institution’s educational purposes, is frequently used by students and is not within the same reasonably contiguous geographic area of the institution.

Public Property – all public property, including thoroughfares, streets and sidewalks that are within the campus or immediately adjacent to and accessible from the campus is considered public property.

CRIME DEFINITIONS

The Higher Education Act (HEA) defines the crime categories of domestic violence, dating violence and stalking in accordance with section 40002(a) of the Violence Against Women Act (VAWA) of 1994 as follows:

Domestic Violence – a felony or misdemeanor crime of violence committed by:

- A current or former spouse or intimate partner of the victim,
- A person with whom the victim shares a child in common,
- A person who is cohabitating with or has cohabitated with the victim as a spouse or intimate partner,
- A person similarly situated to a spouse of the victim under the domestic or family violence laws of the jurisdiction receiving grant monies [under VAWA], or
- Any other person against an adult or youth victim who is protected from that person's acts under the domestic or family violence laws of the jurisdiction

Dating Violence – violence committed by a person:

- Who is or has been in a social relationship of a romantic or intimate nature with the victim; and
- Where the existence of such a relationship shall be determined based on a consideration of the following factors:
 - The length of the relationship;
 - The type of relationship; and
 - The frequency of interaction between the persons involved in the relationship

Stalking – engaging in a course of conduct directed at a specific person that would cause a reasonable person to:

- Fear for his or her safety or the safety of others; or
- Suffer substantial emotional distress

As required by the Clery Act, the following crime definitions are based on the Federal Bureau of Investigation's (FBI's) Uniform Crime Reporting Handbook (UCR) classifications.

Murder – the willful (non-negligent) killing of a human being by another.

Negligent Manslaughter – the killing of another person through gross negligence.

Sex Offenses, Forcible – the carnal knowledge of a person, forcibly and/or against the person's will where the victim is incapable of giving consent because of his/her temporary or permanent mental or physical incapacity (or because of his/her youth).

Sex Offenses, Non-Forcible – any incidents of unlawful, non-forcible sexual intercourse.

Domestic Violence – asserted violent misdemeanor and felony offenses committed by the victim's current or former spouse, current or former cohabitant or person similarly situated under domestic or family violence law.

Dating Violence – violence by a person who has been in a romantic or intimate relationship with the victim. Whether there was such relationship will be gauged by its length, type, and frequency of interaction.

Stalking – a course of conduct directed at a specific person that would cause a reasonable person to fear for her, his, or others safety, or to suffer substantial emotional distress.

Robbery – the taking, or attempt to take, anything of value in the care, custody or control of a person or persons by force or the threat of force or violence and/or putting the victim in fear.

Aggravated Assault – an unlawful attack by one person upon another for the purpose of inflicting severe or aggravated bodily injury. This type of assault usually is accompanied by the use of a weapon or by a means likely to produce death or great bodily harm. It is not necessary that injury result from an aggravated assault when a gun, knife or other weapon is used which could or probably would result in a serious potential injury if the crime were successfully completed.

Burglary – the unlawful entry of a structure to commit a felony or theft. For reporting purposes this definition includes: unlawful entry with intent to commit a larceny or a felony, breaking and entering with intent to commit a larceny, housebreaking, safe cracking and all attempts to commit any of the aforementioned.

Theft (Larceny) – the unlawful taking, carrying, leading or riding away of property from the possession or constructive possession of another.

Auto Theft (Motor Vehicle Theft) – the theft or attempted theft of a motor vehicle.

Arson – any willful or malicious burning or attempt to burn, with or without intent to defraud, a dwelling house, public building, motor vehicle or aircraft or personal property of another kind.

Liquor Law Violations – the violation of law or ordinances prohibiting the manufacture, sale, transporting, furnishing or possessing of intoxicating liquor; maintaining unlawful drinking places; bootlegging; operating a still; furnishing liquor to a minor; using a vehicle for illegal transportation of liquor; drinking on a train or public conveyance; and all attempts to commit any of the aforementioned. (Drunkenness and driving under the influence are not included in this definition.)

DWI (Driving While Under the Influence) – operating or controlling a motor vehicle while under the influence of spirituous liquor or drugs.

Drug Law Violations – violations of state and local laws relating to the unlawful possession, sale, use, growing, manufacturing and making of narcotic drugs. The relevant substances include: opium or cocaine and their derivatives (morphine, heroin, codeine); marijuana; synthetic narcotics (Demerol, methadone); and dangerous non-narcotic drugs (barbiturates, Benzedrine).

Weapon Law Violations – the violation of laws or ordinances dealing with weapons offenses, such as manufacture, sale or possession of deadly weapons, concealed or openly; furnishing deadly weapons to minors; aliens possessing weapons; and all attempts to commit any of the aforementioned.

Hate Crimes – a criminal offense committed against a person or public property that is motivated, in whole or in part, by the offender’s bias against a race, religion, ethnic/national origin, sexual orientation, gender or disability.

GUIDE TO CLERY ACT OFFENSES IN NEW MEXICO

GUIDE TO CLERY ACT OFFENSES IN NEW MEXICO

PRIMARY CRIMES *	Offense	Clery Act Crime Definition(s) Followed by Commonly Used and Associated State Statute(s)
	Murder/Non-Negligent Manslaughter*	The willful killing of one human being by another (Count one offense per victim). Any death caused by injuries received in a: 1.) fight, 2.) argument, 3.) quarrel, 4.) assault, 5.) commission of a crime. Do not count: 1.) suicides, 2.) fetal deaths, 3.) traffic fatalities, 4.) accidental deaths, 5.) attempted murder, 6.) justifiable homicide.
	30-2-1 Murder	Murder in the first degree is the killing of one human being by another without lawful justification or excuse, by an of the means with which death may be caused: 1.) by any kind of willful, deliberate and premeditated killing; 2.) in the commission of or attempt to commit any felony; or 3.) by any act greatly dangerous to the lives of others, indicating a depraved mind regardless of human life. Unless he is acting upon sufficient provocation, upon a sudden quarrel or in the heat of passion, a person who kills another human being without lawful justification or excuse commits murder in the second degree if in performing the acts which cause the death he knows that such acts create a strong probability of death or great bodily harm to that individual or another.
	30-2-3.A Manslaughter	Manslaughter is the unlawful killing of a human being without malice. Voluntary manslaughter consists of manslaughter committed upon a sudden quarrel or in the heat of passion.
	Manslaughter by Negligence	Killing of another person through gross negligence (Count one offense per victim). Count any death caused by gross negligence of another. Gross negligence is the intentional failure to perform a manifest duty in reckless disregard of the consequences as affecting the life or property of another. Do not count deaths of persons due to their own negligence, accidental deaths not resulting from gross negligence and traffic fatalities.
	30-2-3.B Manslaughter	Manslaughter is the unlawful killing of a human being without malice. Involuntary manslaughter consists of manslaughter committed in the commission of an unlawful act not amounting to a felony, or in the commission of a lawful act which might produce death in an unlawful manner or without due caution and circumspection.

PRIMARY CRIMES *	Rape * **	Penetration, no matter how slight, of the vagina or anus with any body part or object, or oral penetration by a sex organ of another person, without the consent of the victim. This definition included any gender of victim or perpetrator. This definition also includes instances in which the victim is incapable of giving consent because of temporary or permanent mental or physical incapacity (including due to the influence of drugs or alcohol). Physical resistance is not required on the part of the victim to demonstrate lack of consent.
	30-9-11 Criminal Sexual Penetration	Criminal sexual penetration is the unlawful and intentional causing of a person to engage in sexual intercourse, cunnilingus, fellatio or anal intercourse or the causing of penetration, to any extent and with any object, of the genital or anal openings of another; whether or not there is any emission.
	Fondling * **	The touching of the private body parts of another person for the purpose of sexual gratification without the consent of the victim, including instances where the victim is incapable of giving consent because of his/her age or temporary or permanent mental or physical incapacity.
	30-9-12 Criminal Sexual Contact	Criminal sexual contact is the unlawful and intentional touching of or application of force, without consent, to the unclothed intimate parts of another who has reached his eighteenth birthday, or intentionally causing another who has reached his eighteenth birthday to touch one's intimate parts.
	30-9-13 Criminal Sexual Contact of a Minor	Criminal sexual contact of a minor is the unlawful and intentional touching of or applying force to the intimate parts of a minor or the unlawful and intentional causing of a minor to touch one's intimate parts. For this purposes of this section, "intimate parts" means primary genital area, groin, buttocks, anus or breast.
	Incest * **	Sexual intercourse between persons who are related to each other within the degrees wherein marriage is prohibited by law. If force or threat of force exists then this will be counted as Rape.
	30-10-3. Incest	Incest consists of knowingly and intentionally intermarrying or having sexual intercourse with persons within the following degrees of consanguinity: parents and children including grandparents and grandchildren of every degree, brothers and sisters of the half as well as of whole blood, uncles and nieces, aunts and nephews.
	Statutory Rape * **	Sexual intercourse with a person who is under the statutory age of consent. If force or threat of force exists then this will be counted as Rape. Count only victims that fit the state's statutory age limit.

PRIMARY CRIMES *	30-9-11.G Criminal Sexual Penetration	Criminal sexual penetration in the fourth degree consists of all criminal sexual penetration: 1.) not defined in Subsection D through F of the statute perpetrated on a child thirteen to sixteen years of age when the perpetrator is at least eighteen years of age and is at least four years older than the child and not the spouse of that child.
	Robbery *	The taking or attempting to take anything of value from the care, custody or control of a person or persons by force or threat of force or violence and/or by putting the victim in fear.
	30-16-2 Robbery	Robbery consists of the theft of anything of value from the person of another or from the immediate control of another, by use or threatened use of force or violence.
	Aggravated Assault *	An unlawful attack by one person upon another for the purpose of inflicting severe or aggravated bodily injury. Factors to consider: 1.) type of weapon employed or use of an object as a weapon, 2.) seriousness of the injury, 3.) intent to cause serious injury. Count one offense per victim.
	30-3-2 Aggravated Assault	Aggravated assault consists of either: 1.) unlawfully assaulting or striking at another with a deadly weapon; 2.) committing assault by threatening or menacing another while wearing a mask, hood, robe or other covering upon the face, head or body, or while disguised in any manner, so as to conceal identity; or 3.) willfully and intentionally assaulting another with intent to commit any felony.
	30-3-3 Assault With Intent To Commit A Violent Felony	Assault with intent to commit a violent felony consists of any person assaulting another with intent to kill or commit any murder, mayhem, criminal sexual penetration in the first, second or third degree, robbery or burglary.
	30-3-5 Aggravated Battery	Aggravated battery consists of unlawful touching or application of force to the person of another with intent to injure that person or another.
	Burglary *	The unlawful entry of a structure to commit a felony or a theft. Elements include: 1.) forcible entry, 2.) unlawful entry - no force or 3.) attempted forcible entry.
	30-16-3 Burglary	Burglary consists of the unauthorized entry of any dwelling or other structure, movable or immovable, with intent to commit a felony or theft therein

GUIDE TO CLERY ACT OFFENSES IN NEW MEXICO

PRIMARY CRIMES *	30-16-4 Aggravated Burglary	Aggravated burglary consists of the unauthorized entry of any dwelling or other structure, movable or immovable, with intent to commit any felony or theft therein and the person either: 1.) is armed with a deadly weapon; 2.) after entering, arms himself with a deadly weapon; or 3.) commits a battery upon any person while in such place, or in entering or leaving such place.
	Motor Vehicle Theft *	The theft or attempted theft of a motor vehicle. Count one offense for each stolen vehicle.
	30-16D-1 Unlawful Taking of a Vehicle or Motor Vehicle	Unlawful taking of a motor vehicle or motor vehicle consists of a person taking any vehicle or motor vehicle as defined by the Motor Vehicle Code [66-1-1 NMSA 1978] intentionally and without consent of the owner.
	Arson *	Any willful or malicious burning or attempt to burn, with or without intent to defraud, a dwelling house, public building, motor vehicle or aircraft or personal property of another.
	30-17-5 Arson and Negligent Arson	Arson consists of a person maliciously or willfully starting a fire or causing an explosion with the purpose of destroying or damaging: 1.) a building, occupied structure or property of another person; 2.) a bridge, utility line, fence or sign; or 3.) any property, whether the person's own property or the property of another person, to collect insurance for the loss.
	30-17-6 Aggravated Arson	Aggravated arson consists of the willful or malicious damaging by any explosive substance or the willful or malicious setting fire to any bridge, aircraft, watercraft, vehicle, pipeline, utility line, communication line or structure, causing a person great bodily harm
VAWA OFFENSES	Domestic Violence	A felony or misdemeanor crime of violence committed by: 1.) a current or former spouse or intimate partner of the victim, 2.) by a person with who the victim shares a child in common, 3.) by a person who is cohabitating with, or has cohabitated with the victim as a spouse or intimate partner, 4.) by a person similarly situated to a spouse of the victim under the domestic or family violence laws of the jurisdiction in which the crime of violence occurred or 5.) by any other person against an adult or youth victim who is protected from that person's acts under the domestic or family violence laws of the jurisdiction in which the crime of violence occurred.
	30-3-15 Battery Upon A Household Member	Battery upon a household member consists of the unlawful, intentional touching or application of force to the person of a household member, when done in a rude, insolent or angry manner.
	30-3-16 Aggravated Batter Upon A Household Member	Aggravated battery upon a household member consists of the unlawful touching or application of force to the person of a household member with intent to injure that person or another.

VAWA OFFENSES	Dating Violence	Violence committed by a person who is or has been in a social relationship of a romantic or intimate nature with the victim.
	34 CFR 668.446(a). Definitions	Pursuant to the 34 CFR 668.46(a) Definitions, and the Federal Register, Volume 79, No. 202, page 62757, Column 3, ENMU includes all cases of 'dating violence' in the statistics for 'domestic violence', as New Mexico State Statutes already include dating violence in domestic violence violations and prosecutions. As a result, there are no cases of 'dating violence' listed individually as statistics.
	Stalking	Engaging in a course of conduct directed at a specific person that would cause a reasonable person to: 1.) fear for the person's safety or the safety of others; or 2.) suffer substantial emotional distress.
	30-3A-3 Stalking	Stalking consists of knowingly pursuing a pattern of conduct, without lawful authority, directed at a specific individual when the person intends that the pattern of conduct would place the individual in reasonable apprehension of death, bodily harm, sexual assault, confinement or restraint of the individual or another individuals.
HATE CRIMES	Larceny - Theft	The unlawful taking, carrying, leading or riding away of property from the possession or constructive possession of another.
	30-16-1 Larceny	Larceny consist of the stealing of anything of value that belongs to another.
	30-16-3.B Auto Burglary	Any person who, without authorization, enters any vehicle, watercraft, aircraft or other structure, movable or immovable, with intent to commit any felony or theft therein is guilty of a fourth-degree felony.
	Simple Assault	An unlawful physical attack by one person upon another where neither the offender displays a weapon, nor the victim suffers obvious severe or aggravated bodily injury involving apparent broken bones, loss of teeth, possible internal injury, severe laceration or loss of consciousness.
	30-3-4 Battery	Battery is the unlawful, intentional touching or application of force to the person of another, when done in a rude, insolent or angry manner.
	30-3-5.B Aggravated Battery	Aggravated battery consist of the unlawful touching or application of force to the person of another with intent to injure that person or another and did so by inflicting an injury to the person which is not likely to cause death or great bodily harm, but does cause temporary disfigurement or temporary loss or impairment of the functions of any member or organ of the body.

GUIDE TO CLERY ACT OFFENSES IN NEW MEXICO

HATE CRIMES	Intimidation	To unlawfully place another person in reasonable fear of bodily harm through the use of threatening words and/or other conduct, but without displaying a weapon or subjecting the victim to actual physical attack.
	30-3-1 Assault	Attempt to commit a battery upon the person of another; or any unlawful act, threat or menacing conduct which causes another person to reasonable believe that they are in danger of receiving an immediate battery; or the use of insulting language toward another impugning their honor delicacy or reputation.
	30-24-3.B Intimidation of a Witness	Consists of any person knowingly engaging in conduct that causes bodily injury to another person or damage to the tangible property of another person, or threatening to do so, with the intent to retaliate against any person for any information relating to the commission or possible commission of a felony offense or a violation of conditions of probation, parole or release pending judicial proceedings.
	Destruction, Damage or Vandalism of Property	To willfully or maliciously destroy, damage, deface or otherwise injure real or personal property without the consent of the owner or the person having custody or control of it.
	30-15-1 Criminal Damage to Property	Criminal damage to property consists of intentionally damaging any real or personal property of another without the consent of the owner of the property.
	30-15-1.1 Unauthorized Graffiti	Consists of intentionally and maliciously defacing any real or personal property of another with graffiti or other inscribed material with ink, paint, spray paint, crayon, charcoal or the use of any object without the consent or reasonable ground to believe there is consent of the owner of the property.
ARRESTS AND REFERRALS	Weapon Law Violations	Violation of state laws prohibiting the manufacture, sale, purchase, transportation, possession, concealment or use of firearms, cutting instruments, explosives, incendiary devices or other deadly weapons.
	30-7-2 Unlawful Carrying of a Deadly Weapon	Unlawfully carrying of a deadly weapon consists of carrying a concealed loaded firearm or any other type of deadly weapon anywhere.
	30-7-2.2 Unlawful Possession of a Handgun	Consists of a person knowingly having a handgun in his possession or knowingly transporting a handgun absent of established statutory exceptions.
	30-7-2.4 Unlawful Carrying of a Firearm on University Premises	Consists of carrying a firearm on university premises absent of established statutory exceptions.

ARRESTS AND REFERRALS	30-7-4 Negligent Use of a Deadly Weapon	Negligent use of a deadly weapon consists of discharging a firearm into any building or vehicle or so as to knowingly endanger a person or his property.
	30-7-8 Unlawful Possession of Switchblades	Unlawful possession of switchblades consists of any person, either manufacturing, causing to be manufactured, possessing, displaying, offering, selling, lending, giving away or purchasing any knife which has a blade which opens automatically by hand pressure applied to a button, spring or other device in the handle of the knife, or any knife having a blade which opens or falls or is ejected into position by the force of gravity or by any outward or centrifugal thrust or movement.
	Drug Law Violations	Violations of state laws prohibiting the production, distribution and/or use of certain controlled substances and the equipment or devices utilized in their preparation and/or use.
	30-31-23 Controlled Substances	It is unlawful for a person intentionally to possess a controlled substance unless the substance was obtained pursuant to a valid prescription or order of a practitioner while acting in the course of professional practice or except as otherwise authorized by the Controlled Substances Act.
	30-31-25.1 Possession, Delivery or Manufacture of Drug Paraphernalia Prohibited	It is unlawful for a person to use or possess with intent to use drug paraphernalia to plant, propagate, cultivate, grow, harvest, manufacture, compound, convert, produce, process, prepare, test, analyze, pack, repack, store, contain, conceal, inject, ingest, inhale or otherwise introduce into the human body a controlled substance in violation of the Controlled Substances Act.
	30-31-20 Trafficking Controlled Substances	It is unlawful for a person to manufacture, distribute, sell, barter, give away or traffic a controlled substance in violation of the Controlled Substances Act.
	Liquor Law Violations	Violations of state laws prohibiting the manufacture, sale, purchase, transportation, possession or use of alcoholic beverages.
	60-7B-1.C Minor in Possession of Alcohol	It is a violation of the Liquor Control Act for a minor to buy, attempt to buy, receive, possess or permit the minor's self to be served with alcoholic beverages.
	60-7B-7 Presenting False Evidence of Age or Identity	A minor who presents to any person license pursuant to the provisions of the Liquor Control Act [60-3A-1 NMSA 1978] or any employee, agent or lessee of that person any written, printed or photostatic evidence of age or identity that is false, for the purpose of procuring or attempting to procure any alcoholic beverages.
	60-7B-1.A Selling, Serving or Giving Alcohol to Minors	It is a violation of the Liquor Control Act for a person, including a person licensed pursuant to the provisions of the Liquor Control Act, or an employee agent or lessee of that person, if the person knows or has reason to know that the person is violating the provisions of this section, to: 1.) sell, serve or give alcoholic beverages to a minor or permit a minor to consume alcoholic beverages on the licensed premises; 2.) buy alcoholic beverages for or procure the sale or service of alcoholic beverages to a minor; 3.) deliver alcoholic beverages to a minor; or 4.) aid or assist a minor to buy, procure or be served with alcoholic beverages.

GUIDE TO CLERY ACT OFFENSES IN NEW MEXICO

* Clery Act Primary Crimes can also fall under the category of Hate Crimes when the criminal offense manifests evidence that the victim was intentionally selected because of the perpetrator bias against the victim. Bias is a preformed negative opinion or attitude toward a group of persons based on their race, religion, disability, sexual orientation, ethnicity, [national origin], gender or gender identity.

** Clery Act Primary Crimes that also fall under the category of Violence Against Women.

Important Note: The list of New Mexico state statutes which follow the Clery Act crime definitions on this chart are not an all-inclusive list of criminal violations which could meet the Clery Act crime definitions. This list was provided for educational purposes and to assist Campus Security Authorities with evaluating reports and information they receive. The state statutes listed are some of the more common offenses associated with these definitions.



FIRE SAFETY REPORT

The Jeanne Clery Disclosure of Campus Security Policy and Campus Crime Statistics Act of 1998, commonly referred to as the Clery Act, requires institutions of higher education receiving federal financial aid to report specified fire statistics on college campuses and to provide other fire safety information to members of the campus community. As provided by the Jeanne Clery Disclosure of Campus Security Policy and Campus Crime Statistics Act of 1998, enrolled students are entitled to request and receive a copy of the Fire Safety Report for the ENMU campus. The report includes statistics for the past three years concerning fires that occurred in an on-campus student housing facility that is reported to the ENMU-Portales campus' loss prevention and control coordinator/safety officer and/or ENMU DPS. The report also provides campus policies and practices concerning fire safety for on-campus student housing facilities, a description of fire safety systems, procedures for evacuations, rules and regulations, safety education and training programs and how to report a fire.

You may obtain a copy of this report by contacting ENMU DPS in person at the corner of South Avenue K and Third Street or online at enmu.edu/SafetySecurity. For the purpose of the Fire Safety Report, a fire is defined as, "Any instance of open flame or other burning in a place not intended to contain the burning or in an uncontrolled manner."

Fire Safety Systems in Campus Residential Facilities

Curry Hall – has a fire alarm system with smoke detectors attached and an auto dialer connected to Roosevelt County regional dispatch services. The smoke detectors located in each room are not connected to the fire alarm. The smoke detectors in the hallways are attached to the fire alarm system. Fire extinguishers are readily available in common areas.

Eddy Hall – has a fire alarm system that has an auto dialer connected to Roosevelt County regional dispatch services. The smoke detectors in the hallway and the rooms are attached to the fire alarm system. Fire extinguishers are readily available in common areas.

Guadalupe Hall – has an automatic fire alarm system with public smoke detectors connected to an auto dialer connected to Roosevelt County regional dispatch. Each individual room has smoke detectors. The entire facility is covered by a sprinkler system. Fire extinguishers are readily available in common areas and in the third-floor kitchen.

West Campus Apartments – these apartments have local smoke detectors in each apartment. The smoke detectors are not connected to each other. These apartments are not connected to an auto dialer system. A fire extinguisher is provided for each apartment.

San Juan Village – there are four separate apartment buildings with their own fire alarms that are attached to an auto dialer which is connected to Roosevelt County regional dispatch services. Each apartment has a smoke detector attached to the fire alarm system as well as individual smoke detectors in the rooms. San Juan Village has a sprinkler system throughout all dormitories. San Juan Village is currently independently operated and managed by a private company.

Fire Drills

The ENMU safety officer conducts one fire drill per semester in the on-campus student housing facilities of Curry Hall, Eddy Hall and Guadalupe Hall. The director of Housing and Residence Life also facilitates training programs for housing staff which prepare them to respond to different emergency situations. The ENMU safety officer also conducts annual fire drills in all the on-campus academic buildings.

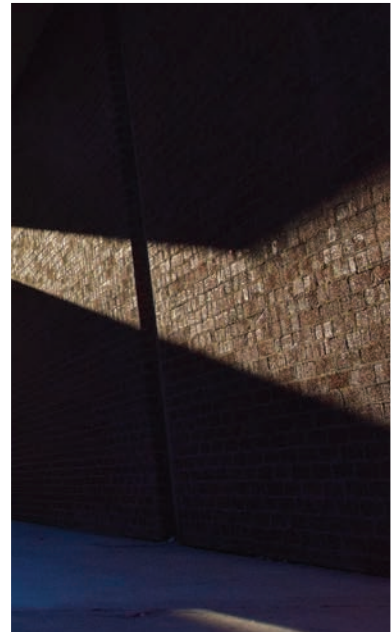
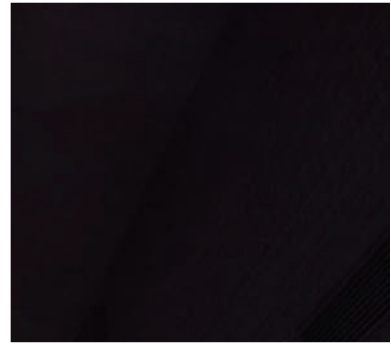
Policies on Appliances, Smoking and Open Flames in Student Housing Facilities

There are three types of student living environments available. These options include traditional halls, suites, conjoined suites and University apartments ranging from one to four bedrooms. Due to fire safety reasons, students are not permitted to cook or prepare meals in residence hall rooms. The use of cooking appliances in residence hall rooms is prohibited. This includes microwaves, hot plates, toasters, toaster ovens, deep fryers, electric skillets or any other open coil heating appliances. Some other items that are prohibited in residence hall rooms are halogen lamps, candles and incense. These policies are available at enmu.edu/Housing. Please feel free to contact the Office of Housing and Residence Life at **575.562.2632**. Housing and Residence Life is located in the Campus Union (CUB).

The Guide to Campus Living contains all of the information, rules and regulations regarding University housing and is available at enmu.edu/CampusLivingGuide. ENMU Smoking and Housing and Residence Life policies prohibit smoking inside any University-owned residential structure. Students and their guests are prohibited from smoking inside any public areas of the residential facility as well as any room/apartment. Smoking is only permitted in areas outside the building at a reasonable distance and in areas designed to prevent smoke from entering the building through entrances, windows or ventilation systems. This allows others to enter and exit the building without passing through smoke. Violations of this policy should be reported to the residence hall director, apartment manager or a resident assistant. Such reports will be investigated; documented and appropriate disciplinary action shall be taken as necessary. Such action may range from a warning to residence hall/apartment probation, and may be referred to the director of Housing and Residence Life and/or the vice president for Student Affairs, at which time any University sanction, including termination of contract, may be imposed.

Building Evacuation Procedures

On-campus student housing facilities have evacuation procedures posted throughout all dormitories; this includes in stairwells, exits, elevators and hallways, and hung on the inside of the door in every individual dormitory room.



If you discover fire, smoke or hear the fire alarm:

- Leave the building immediately via the stairs. **Do not use the elevators.**
- As you leave, close all doors, including those propped open.
- On your way out, you will pass a fire alarm pull station. If the alarm is not already ringing, **pull it.**
- Do not risk your life to fight a fire! Toxic gases, smoke and oxygen deficiency may be present during a fire.
- Once you are outside, get away from the building.
- Witnesses to a fire or fire alarm activation should call 911.
- Remain outside the building until the “ALL CLEAR” is given by the Portales Fire Department, ENMU DPS or building representative. Silencing of the alarm does not constitute as an “ALL CLEAR.”

Fire Safety Education and Training

ENMU staff receive annual training during “Back to School” meetings during the month of August. The training for staff covers the use of fire safety, evacuation procedures and the use of fire extinguishers. Housing and Residence Life employees receive fire safety training annually in August and January. This training includes a fire safety lecture and practical application drills with fire safety equipment (fire extinguisher). Fire safety training is also incorporated with student residents during orientation meetings at the beginning of each semester. All student employees are required to attend new student employee training. This training also covers fire safety, evacuation procedures and practical application drills with fire safety equipment (fire extinguisher). Additional campus fire safety information is available on the U.S. Fire Administration website at [USFA.FEMA.gov/Prevention](https://www.usfa.fema.gov/Prevention).

How to Report a Fire

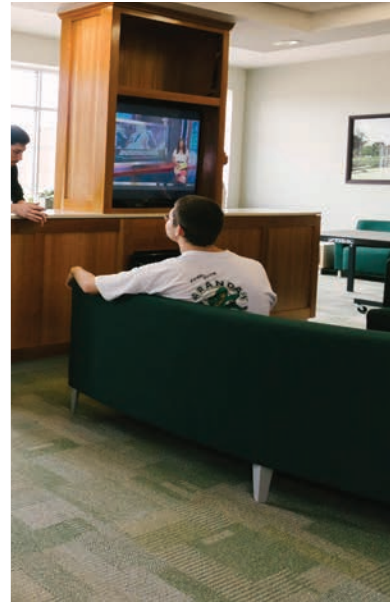
If a fire occurs on the main campus of ENMU, immediately call **911**. Emergency service dispatchers will assure that necessary fire, medical and/or police services are dispatched. If you find evidence of a fire that has been extinguished and are not sure whether the incident has been reported, you should report the incident to ENMU DPS at **575.562.2392** or to the University safety officer at **575.562.2796**. Our geographic location is in close proximity to the Portales Fire Department and aids in response time. The Portales Fire Department is located at 301 South Avenue C, Portales NM, 88130. They can be reached by calling **575.356.4406**. Individuals who live in on-campus student housing facilities should also report a fire or fire alarm to housing staff. The director of Housing and Residence Life can be reached at **575.562.2632**. The residence hall on-duty cell phone number is **575.760.9091**.

Fire Log

In compliance with the Higher Education Opportunity Act, ENMU DPS maintains a Campus Residence Hall Fire Event Log. Information available in the fire log includes the date, time and location of each residential fire as well as type and cause of each fire for the last three years. The fire log is available upon request from ENMU DPS and online at enmu.edu/CriminalActivity.

Residence Halls

Name of Facility	Physical Address	Phone Number
Curry Hall	226 South Avenue K, Portales, NM 88130	575.562.3040
Eddy Hall	1587 South Avenue K, Portales, NM 88130	575.562.3334
San Juan Village	1100 West 17th Street, Portales, NM 88130	575.226.7581
West Campus	1500 Coronado Circle, Portales, NM 88130	575.760.7682
Guadalupe Hall	1124 West 17th Street, Portales, NM 88130	575.562.1384



ENMU-PORTALES (MAIN) CAMPUS FIRE STATISTICS

Campus Residence Halls

Facility Name	Physical Address	Phone Number
Curry Hall	226 South Avenue K, Portales, NM 88130	575.562.3040
Eddy Hall	1587 South Avenue K, Portales, NM 88130	575.562.3334
San Juan Village	1100 West 17th Street, Portales, NM 88130	575.226.7581
West Campus	1500 Coronado Circle, Portales, NM 88130	575.760.7682
Guadalupe Hall	1124 West 17th Street, Portales, NM 88130	575.562.1384

Fire Systems in Residential Facilities

Facility Name	Auto-Dialer	Fire Alarm Monitoring	Fire Sprinkler System	*Partial Sprinkler System	**Full Sprinkler System
Curry Hall	Yes	No	No	No	No
Eddy Hall	Yes	No	No	No	No
San Juan Village	Yes	No	Yes	N/A	Yes
West Campus	No	No	No	No	No
Guadalupe Hall	Yes	No	Yes	N/A	Yes

Facility Name	Smoke Detection	Fire Extinguisher Devices	Evacuation Plans and Placards	Number of Evacuation (Fire) Drills for Previous Year (2023)
Curry Hall	Yes	Yes	Yes	2
Eddy Hall	Yes	Yes	Yes	2
San Juan Village	Yes	Yes	Yes	2
West Campus	Yes	Yes	No	2
Guadalupe Hall	Yes	Yes	Yes	2

* Partial Sprinkler System - A partial sprinkler system is defined as having sprinklers in the common areas only.

** Full Sprinkler System - A full sprinkler system is defined as having sprinklers in both the common areas and individual rooms.

2022-2024 Fire Statistics Related to Residential Facilities

Facility Name	Year	Fires	Injuries	Deaths
Curry Hall	2024	0	0	0
	2023	0	0	0
	2022	0	0	0
Eddy Hall	2024	0	0	0
	2023	0	0	0
	2022	0	0	0
San Juan Village	2024	0	0	0
	2023	0	0	0
	2022	0	0	0
West Campus	2024	0	0	0
	2023	0	0	0
	2022	0	0	0
Guadalupe Hall	2024	0	0	0
	2023	0	0	0
	2022	0	0	0

DISCLAIMER

Expanded 2024 Fire Statistics Related to Residential Facilities

Facility Name	Total Fires	Fire Number	Cause of Fire	Number of Injuries that Required Treatment	Number of Deaths Related to Fire	Value of Property Damage Caused by Fire
Curry Hall	0	N/A	N/A	N/A	N/A	N/A
Eddy Hall	0	N/A	N/A	N/A	N/A	N/A
San Juan Village	0	N/A	N/A	N/A	N/A	N/A
West Campus	0	N/A	N/A	N/A	N/A	N/A
Guadalupe Hall	0	N/A	N/A	N/A	N/A	N/A

DISCLAIMER

The ENMU Annual Security and Fire Safety Report is intended to provide general descriptions of campus security and fire safety information and arrangements that are dynamic in nature. The statements, information, policies and statistics most accurately represented how ENMU-Portales implemented its policies at the time the report was published. This document does not serve as a contractual agreement between the ENMU System and its recipients, readers or other entities.