



WORD OF MOUTH

THE ENMU CDIS PROGRAM NEWSLETTER

Spring 2015



41st Annual Student Research Conference

On April 8, 2015, Eastern New Mexico University hosted the 41st Annual Student Research Conference that was co-chaired by our own Dr. Suzanne Swift and Dr. David Hemley. This event allowed undergraduate and graduate students from all disciplines to show case their research through poster and paper presentations. The CDIS program was represented by 30 graduate students, which included:

Aliyah Daigneaux: *Does Instruction in Literacy Skills Reduce Spelling Errors in High School Students at New Mexico School for the Deaf?*

Trisha Griggs: *The Effects of Music on Memory*

Crystal Jeffers: *The Art and Science of Vocal Pedagogy: Mixing the Methods*

Kate Marlowe: *Child vs. Adult Directed Play: What Does It Matter?*

Melody Spurlin: *How Do Parents Respond To Terminology Used by Speech-Language Pathologists*

Meagan Phillips: *Modes of Test Administration on Accuracy*

List of participants continues on page 5

INSIDE



Research Conference



Commencement



Fashion Show



Scholarships



NSSLHA



Dr. Swift with CDIS students at the 41st Annual Student Research Conference



Commencement 2015

Spring commencement was held on May 16, 2015. Thirty-five bachelor and eighteen master's degree graduates represented the ENMU CDIS Program. It was an exciting day celebrating the graduates' hard work. Congratulations to all the CDIS graduates!

From left to right: Dr. Copple, Dr. Worthington, Dr. Bratcher, Ms. Lebsack, Dr. Swift, Ms. Bougie, Mr. Wilkerson



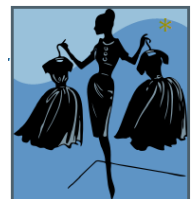
Dr. Swift with the Class of 2015



New Graduates before being hooded

What Not to Wear Professional Dress Fashion Show

Our own Dr. Bratcher and the CDIS graduate assistants put on a fashion Show on March 27. It was a fun afternoon of flaunting today's professional dress fashions for all to see. They also strutted what not to wear down the runway. It was a fun event for all. Continuing education units were available to graduate students who attended the event.



Endowed Scholarships

Endowed Scholarships are an integral part of the ENMU Foundation and Eastern New Mexico University. Some scholarships are established in the name of an organization, however, they are also a way of honoring individuals who have been outstanding in their areas of expertise. Mr. Dwayne Wilkerson has worked to raise funds for the Gail Ferguson Endowed Scholarship for Graduate Studies in Communicative Disorders. According to the ENMU Foundation, Mr. Wilkerson's work and dedication has paid off. The Gail Ferguson Scholarship is now fully funded!



*Mr. Gayle Ferguson
presenting the scholarship to
Kayleigh Gentry*

If you are interested in continuing to support our scholarships,
please send your tax deductible gift to:

The ENMU Foundation

ENMU Station 8

1500 South Avenue K

Portales, NM 88130

Or

Donate online at <http://www.enmu.edu/friends>

For more information contact:

dwayne.wilkerson@enmu.edu



NSSHLA NEWS



Undergraduates Karah Tooley and Kaitlin Nix receive their NSSHLA graduation stoles

NSSHLA Officers

President-Kayla Cullison
Vice President-Whitney Cordova
Secretary-Wafa Haddad

Sponsors: Ms. Nicole Bougie
Dr. Adrienne Bratcher

Research Projects: (Cont. from Page 1)

Katrina Johnson: *The Immediate Effects of Cigarette Smoking on the Voice of Smokers*

Laura Tidenberg: *the Effects of Accent on Employability and Listener Perceptions*

Kelsey Schaap: *The Immediate Effects of Exercise on Memory*

Jennifer Herrington: *The effect of Augmented-Alternative Devices on Communication between Staff and Non-Verbal Clients*

Ryan Dinger: *Does Syntax Play a Role in the Verb Formation of Nonsense Words?*

Kayleigh Gentry: *Effects of Colored Stimuli on Memory and Recall in the College Setting*

Stephanie Yen: *The Effects of Mastication on Test Performance*

Mandi Baca: *The Effects of Time Pressure on Critical Thinking and Test Performance*

Erin White-Canales: *The Effects of Speech Sound Disorders on Literacy outcomes of School-Age Children*

Hannah Walker: *The Effects of Note-Taking Method on Lecture Retention*

Mandy Baca: *The Effectiveness of Nonsense Word Stimuli in Articulation Therapy*

Erin White-Canales: *The Effects of Speech Sound Disorders on Literacy outcomes of School-Age Children*

Hannah Walker: *The Effects of Note-Taking Method on Lecture Retention*

Mandy Baca: *The Effectiveness of Nonsense Word Stimuli in Articulation Therapy*

Amber Beck: *Multilingualism: Does It Come at a Cost? The Effect of Accent on Attitude*

Heather Anderson: *The Effects of Leisure Activities on the Cognitive Skills of Older Adults*

AnneMarie Finn: *Overcoming the Challenge of Implicit Instruction for Upper Elementary Struggling Readers*

Alicia Hargrove: *The Relationship between Hand Clenching and Episodic Memory Encoding and Recall*

Madeline Kroll: *The Effects of Anxiety on First Year vs. Second Year Graduate Students*

Krystal Vigil: *Listening Comprehension Tasks in Individual with Simulated Unilateral Hearing Loss: A Pilot Study*

Megan Craft: *Conceptualizing Abstract Vocabulary: How Do We “Know” What We Know?*

Jessica Griego: *Effects of Speechreading on Comprehension in Background Noise*

Alicia Gomez: *The Effects of Multitasking on Reading Comprehension*

Ashley Runquist: *The Effects of Sleep Duration on Test Taking*

Laura Marnorale: *Disconnected: Technology in a Digital Age*

Lance Havens: *Gross Motor Flexion and Principles of Motor Learning Conditions in /r/ Therapy*

Maggie Knaub: *The Effects of Yoga on Recall*

ENMU CDIS Program

Station 3

1500 S. Ave K

Portales, NM 88130

575.562.2156

www.enmu.edu/cdis

